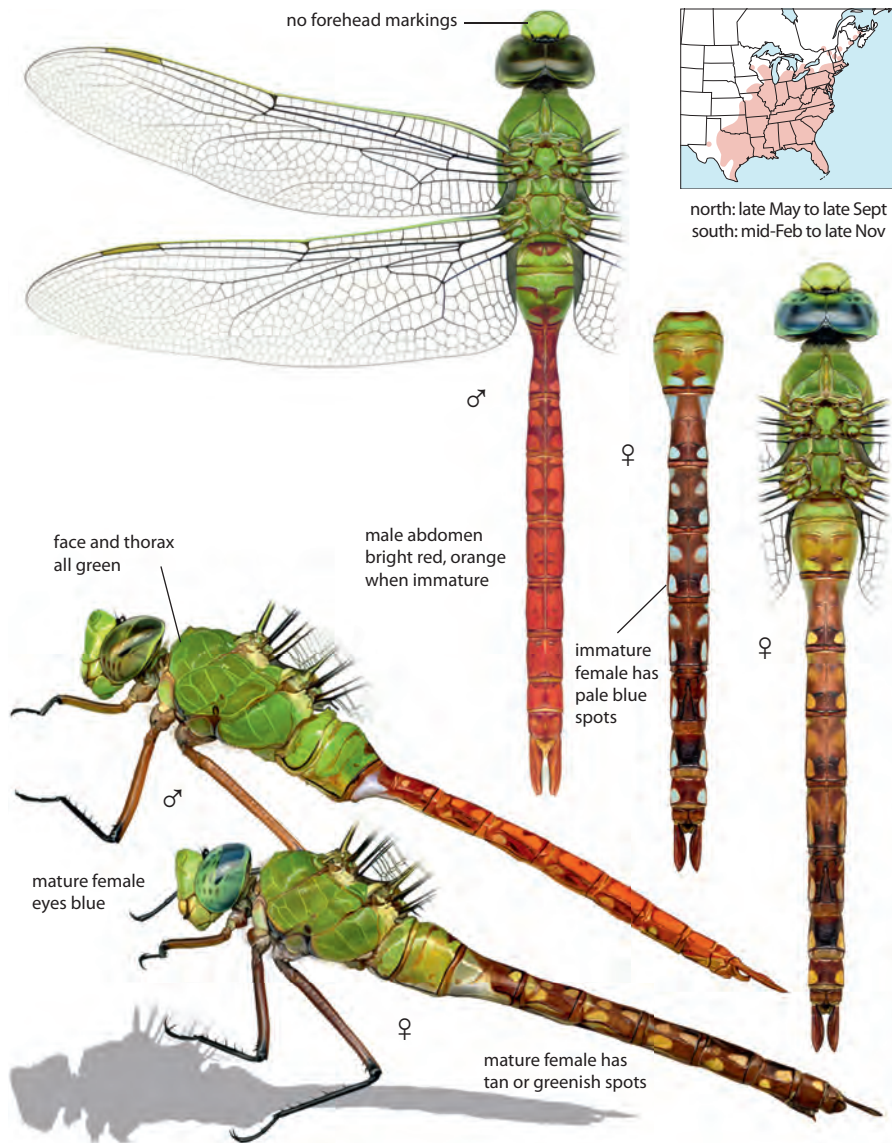


## Contents

Introduction	6
What Are Dragonflies?	7
Life Cycle	8
Dragonfly Anatomy	12
Finding Dragonflies	16
Identifying Dragonflies	17
Dragonfly Families	18
Identification Basics	20
Catching Dragonflies	25
Collecting Dragonflies	26
Species Accounts	27
Petaltails	29
Darners	32
Clubtails	80
Spiketails	191
Cruisers	202
Emeralds	214
Skimmers	268
In-Hand Characters	393
Acknowledgments	437
Resources	438
Species Index	439

## Comet Darner *Anax longipes*

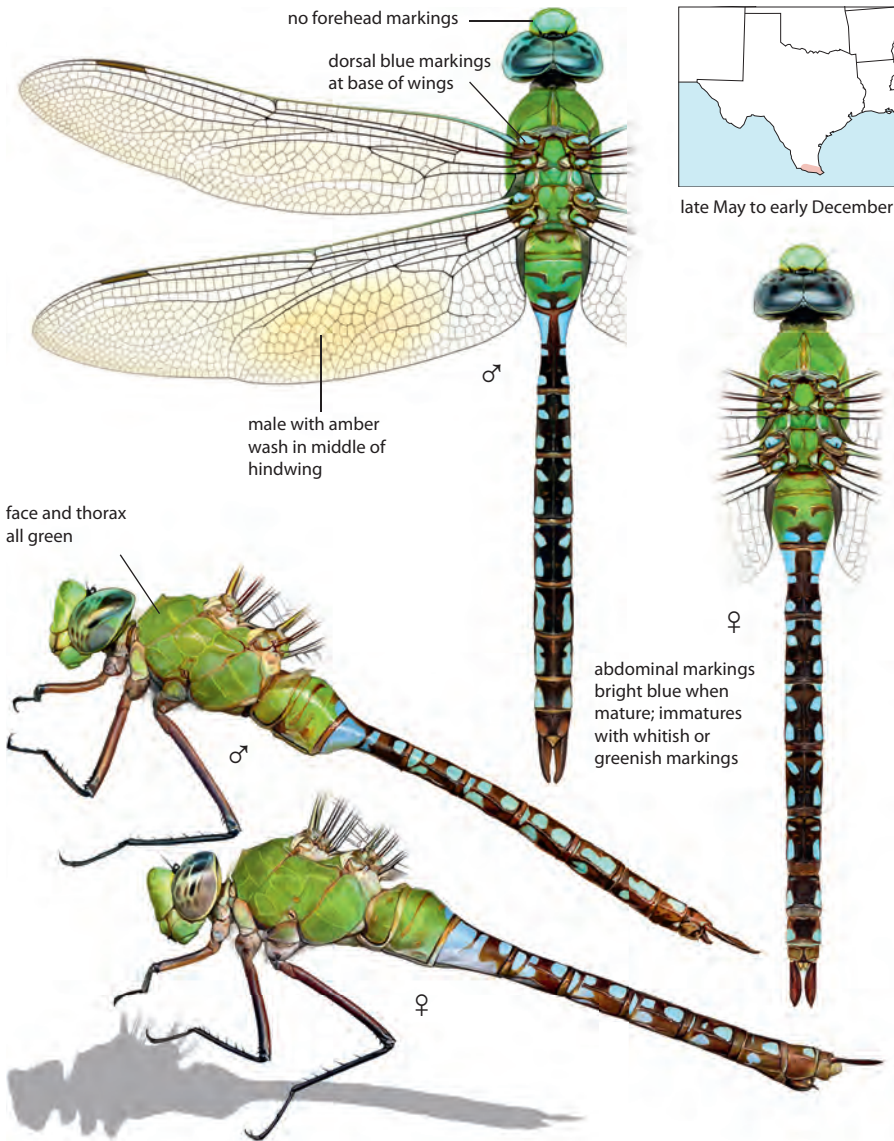
75–87 mm, 2.95–3.4 in. Large green and red darner inhabiting shallow grassy lakes and ponds. Eastern. Thorax all green. Mature male unmistakable with bright red abdomen. Female abdomen reddish-brown with pale spotting. Face green with no forehead markings. Legs long with reddish-brown femurs.



**Similar species:** **Common Green Darner** has shorter, striped abdomen and bull's-eye mark on forehead. Mature **Blue-spotted Comet Darner** has blue abdominal spots and blue markings between the wings. Females are more similar, particularly similar to immature female Comet Darner. Compare cerci shape, page 394. **Amazon Darner** has whitish abdominal spots, white vertical stripe on side of S1, and bull's-eye mark on forehead.

## Blue-spotted Comet Darner *Anax concolor*

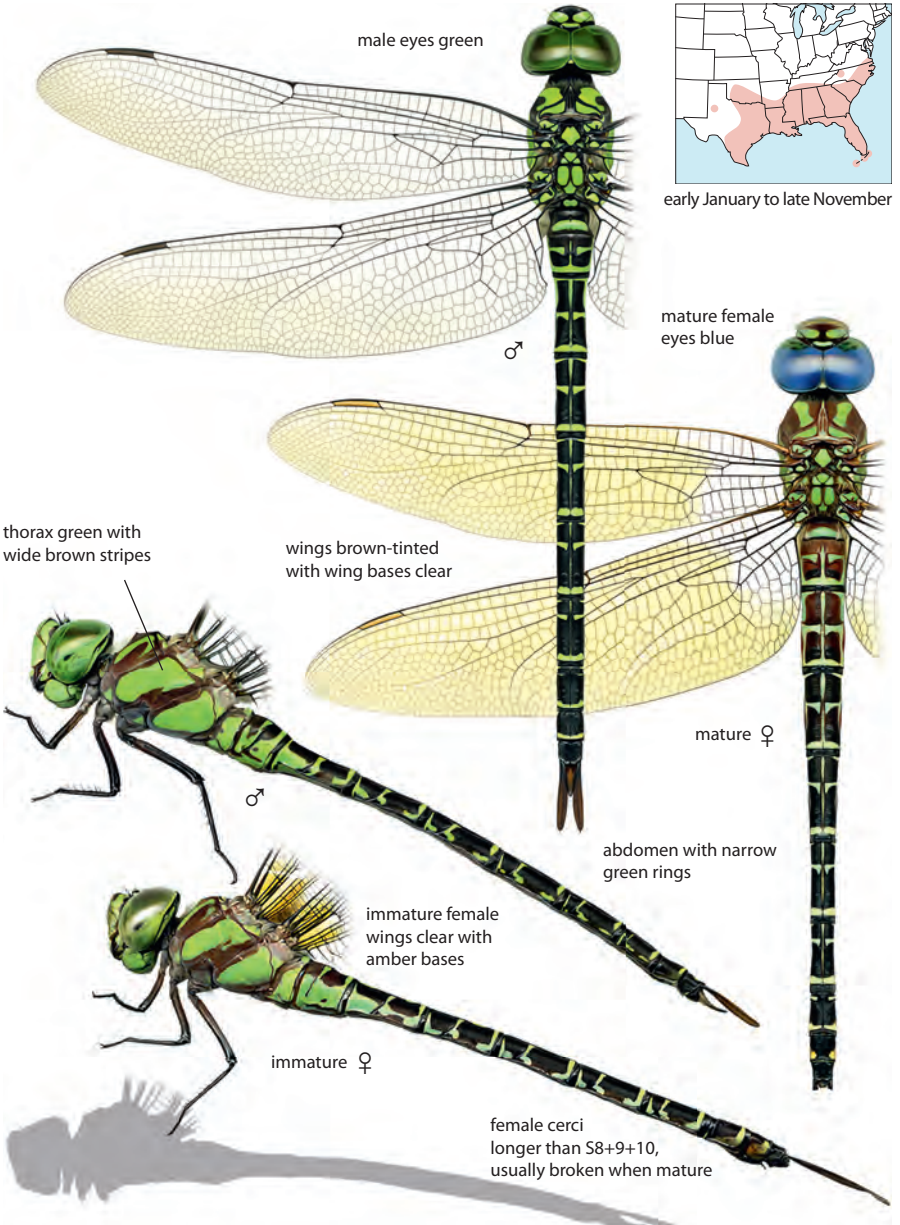
66–77 mm, 2.6–3 in. Large green darner with blue-spotted abdomen. Rare in South Texas at shallow open ponds. Abdomen of both sexes brown with contrasting blue spots; spots whitish or pale green when immature. Face green with no forehead markings. Blue dorsal thoracic markings at base of wings. Face green with no forehead markings. Blue dorsal thoracic markings at base of wings.



**Similar species:** **Comet Darner** abdomen redder with less contrasting spots. Immature females with pale blue spots nearly identical to immature female Blue-spotted Comet Darner. Compare slight differences in cerci shape, page 394. **Amazon Darner** has white vertical stripe on side of S1, whitish abdominal spots, and bull's-eye mark on forehead. **Common Green Darner** has striped abdomen, bull's-eye mark on forehead.

## Regal Darner *Coryphaeschna ingens*

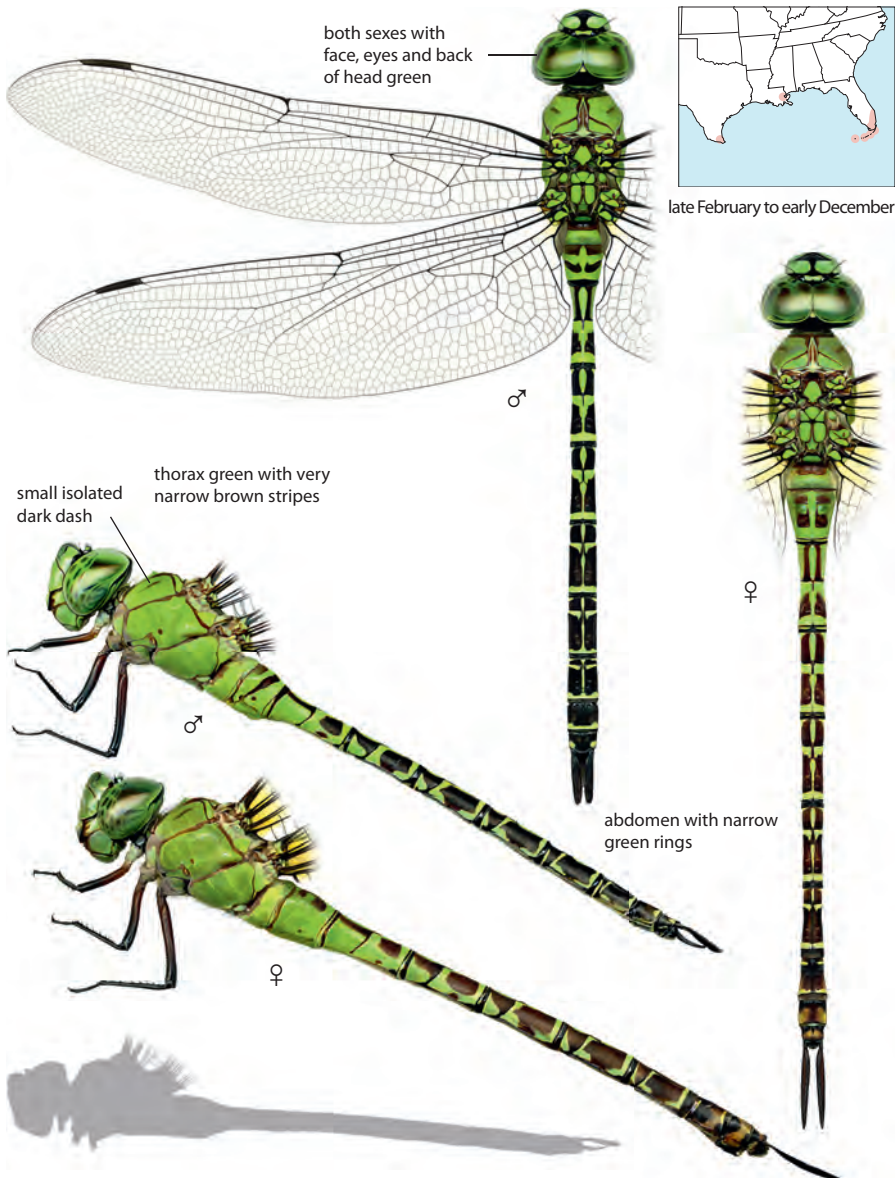
86–90 mm, 3.4–3.5 in. Large, slender, green-striped darner found at vegetated lakes and slow streams in the Southeast. Sexes similar. Thorax green with wide brown stripes, abdomen black with narrow green rings. Face green. Male eyes green, mature female eyes blue. Both sexes with long cerci, often broken on mature female.



**Similar species:** **Swamp Darner** has darker thorax with narrower green stripes. Top of face dark. **Mangrove** and **Blue-eyed Darners** lack wide dark thoracic stripes.

## Mangrove Darner, *Coryphaeschna vindicta*

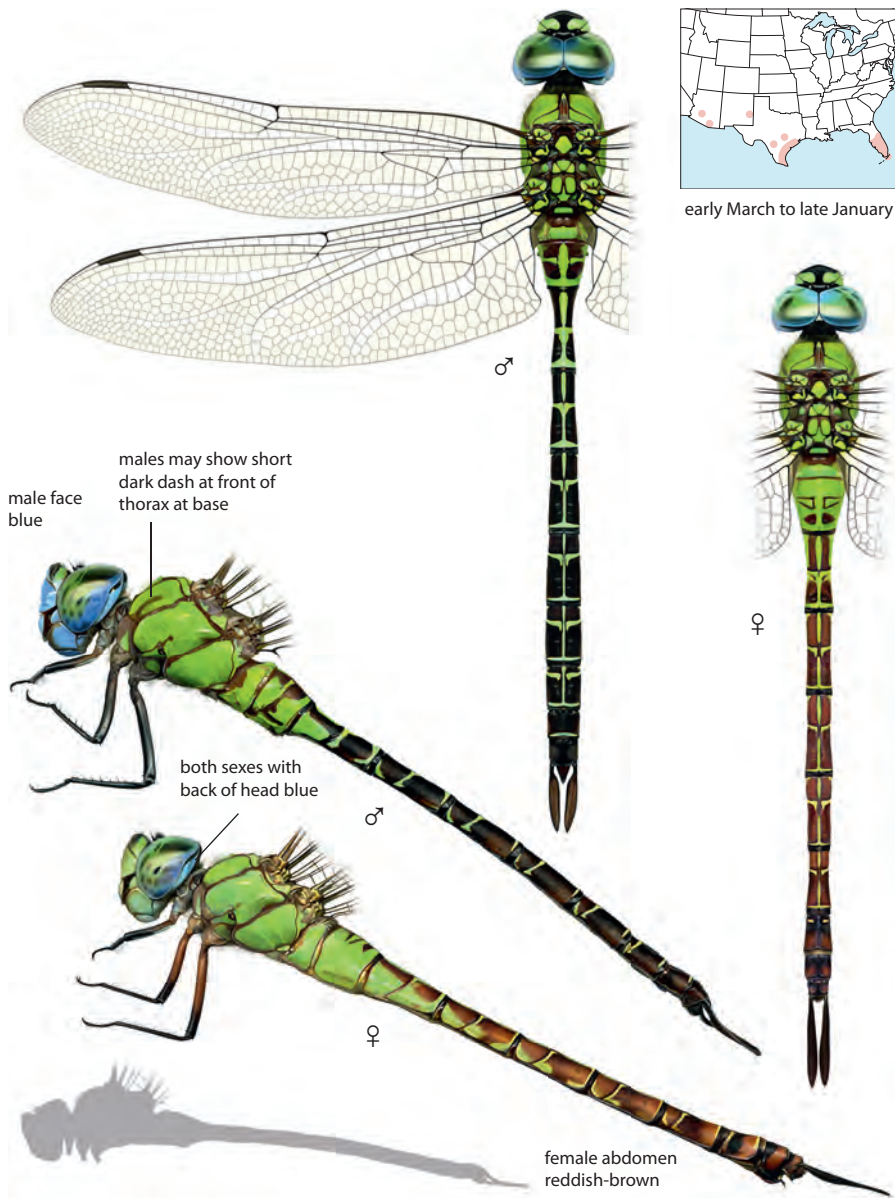
76–85 mm, 3–3.3 in. Large, slender, predominately green-colored darner inhabiting fresh-water ponds and marshes; associated with mangroves in coastal southern Florida. Thorax green with very narrow brown stripes; abdomen dark with narrow green rings. Face, eyes, and back of the head green.



**Similar species:** **Regal Darner** has wide brown thoracic stripes. **Blue-faced Darner** usually lacks small dark dash at front of thorax and has subtly narrower green rings at end of abdominal segments. Face and back of head blue when mature. **Green darners** have different abdomen patterns, spotted or striped but not ringed.

## Blue-faced Darner • *Coryphaea schumackeri*

66–69 mm, 2.6–2.7 in. Small southern darner inhabiting weedy lakes and canals. Thorax green with narrow brown sutures. Abdomen dark with narrow green rings; female abdomen often reddish. Upon maturity, both sexes with rear of head blue, eyes partially blue. Mature male with bright blue face. Mature male with bright blue face.

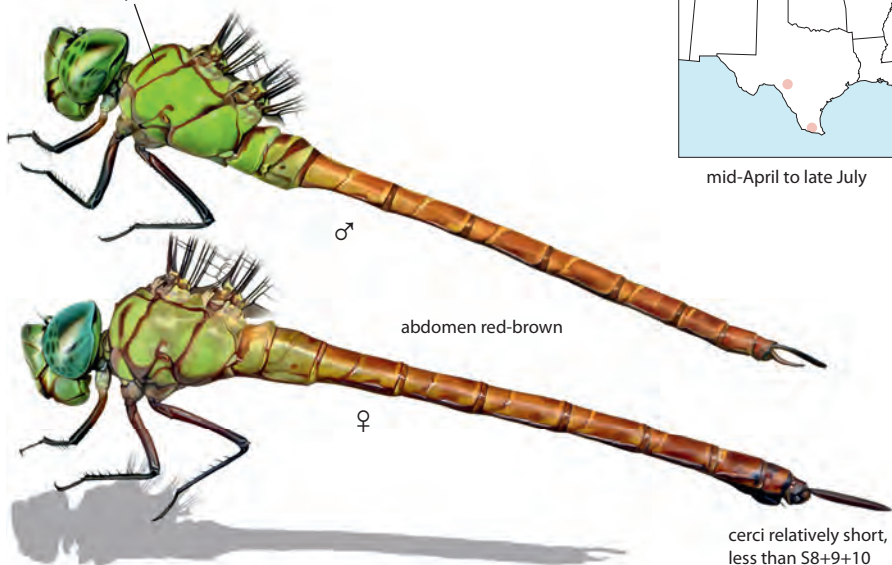


**Similar species:** Mangrove Darner larger; has small, isolated, dark dash at front of thorax and slightly wider green abdominal rings. Lacks blue on head, face, and eyes. **Regal, Malachite** and **Secretive Darners** are all larger with wide dark thoracic stripes.

## Icarus Darner • *Coryphaeschnia opeōra*

79–85 mm, 3.1–3.3 in. Very large pilot darner recently observed in southern Texas. Breeding habitat unknown. Both sexes have a weakly patterned red-brown abdomen. Thorax mostly green with brown frontal stripes.

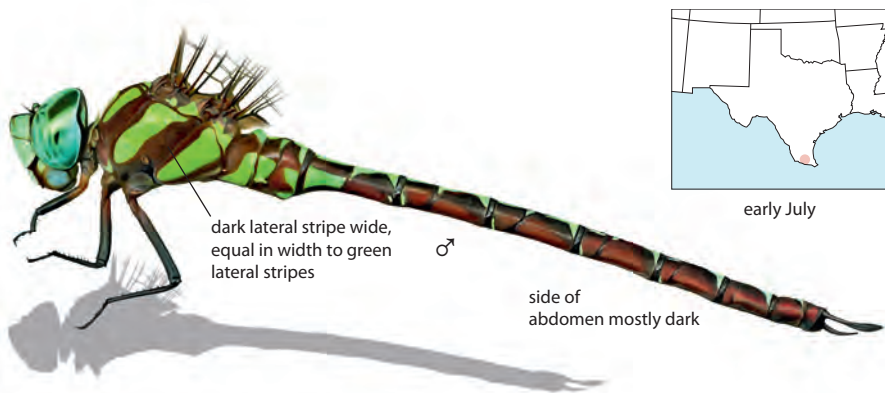
dark frontal stripe



**Similar species:** **Blue-faced Darner** has narrow green rings and stripes on abdomen; dark frontal thoracic stripes shorter when present. **Comet Darner** lacks dark frontal stripes. Mature male abdomen brighter red; female with pale spots on abdomen.

## Secretive Darner • *Remartinia secreta*

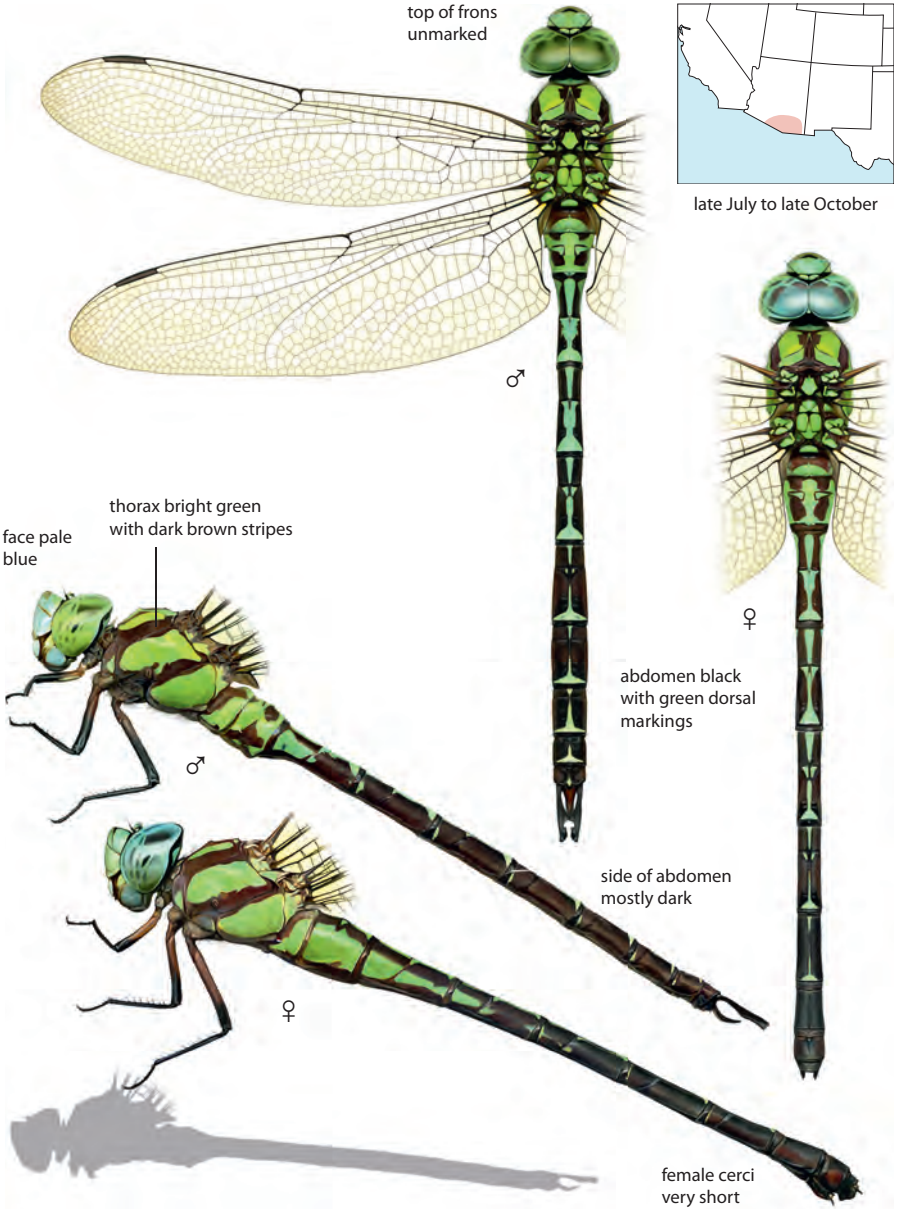
78–80 mm, 3.1 in. Large, poorly known darner; single record in South Texas. Thorax bright green with wide dark brown shoulder and lateral stripes. Abdomen with green dorsal markings, side of abdomen mostly dark.



**Similar species:** **Malachite Darner** very similar, but dark thoracic stripes narrower. Compare male appendages, page 394. **Pilot darners** have pale markings on side of abdomen.

## Malachite Darner *Zygonyx lateripennis*

78–80 mm, 3–3.15 in. Large bright green and brown darner found at southwestern marshy lakes, ponds, and stream pools. Abdomen dark with small green markings largely restricted to top of abdomen. Face pale blue, lacks T-spot. No other darner within its range has a green thorax with wide dark brown stripes.

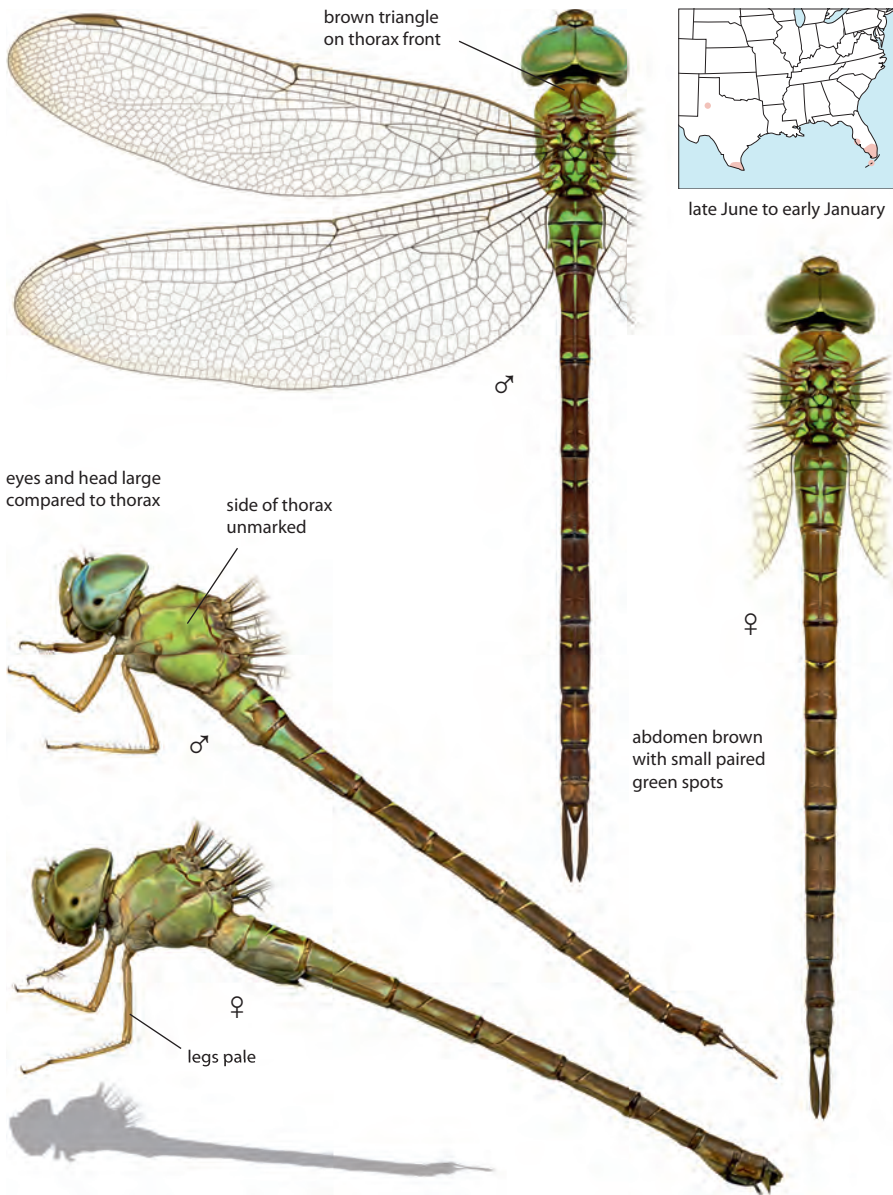


**Similar species:** **Secretive Darner** very similar, but has wider brown thoracic stripes. Compare male appendages, page 394. **Blue-faced Darner** lacks wide dark thoracic stripes.



## Pale-green Darner *Tricentrogynus septima*

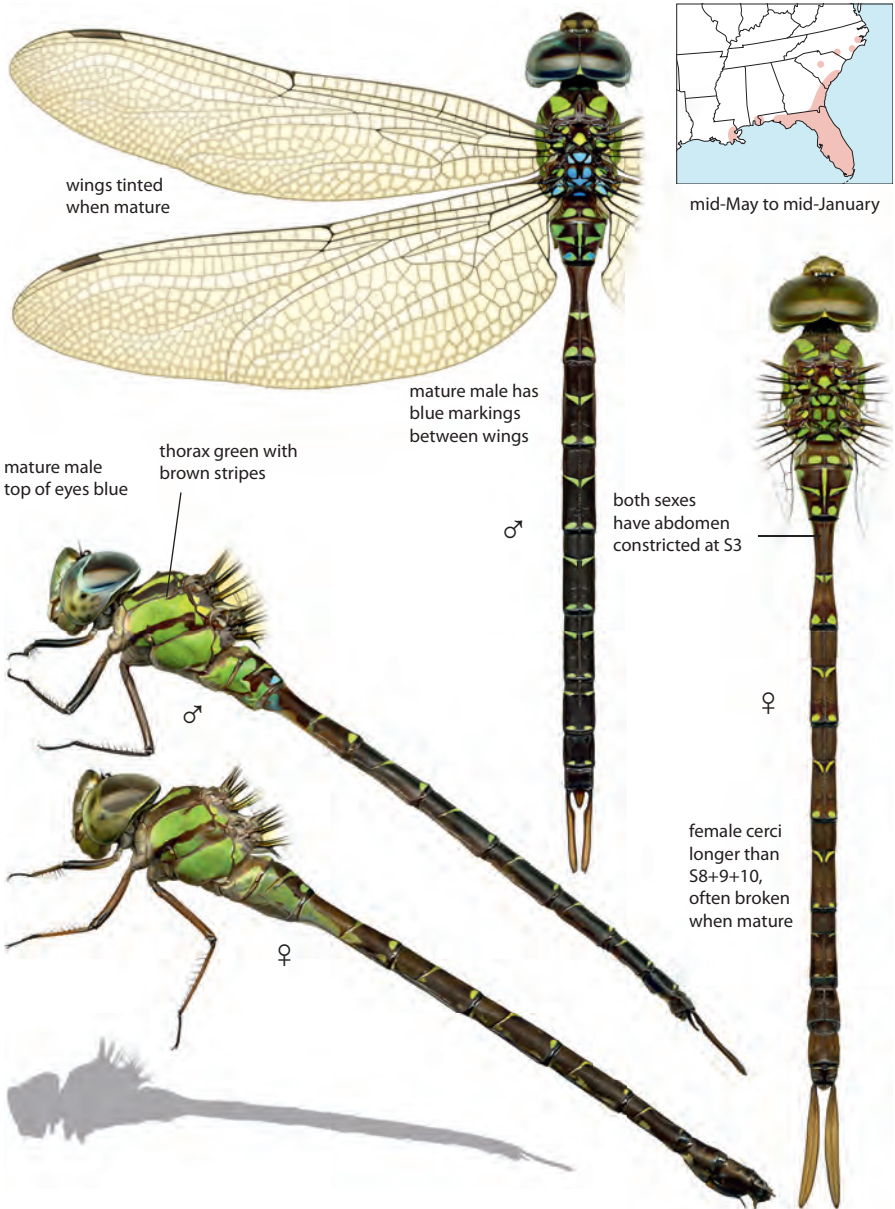
59–66 mm, 2.3–2.6 in. Slender pale crepuscular darner inhabiting seasonal woodland ponds and forested swamps in southern Texas and southern Florida. Thorax pale green with sides largely unmarked. Abdomen long and slender, brown with small green markings. Legs uniformly pale. late June to early January



**Similar species:** **Phantom** and **Caribbean Darners** have brown thoracic stripes. **Blue-faced** and **Mangrove Darners** have black on legs, pale middorsal stripes on abdomen. **Bar-sided Darner** has dark stripe on side of thorax; abdomen constricted at S3.

## Phantom Darner *Tricentrogynus triferus*

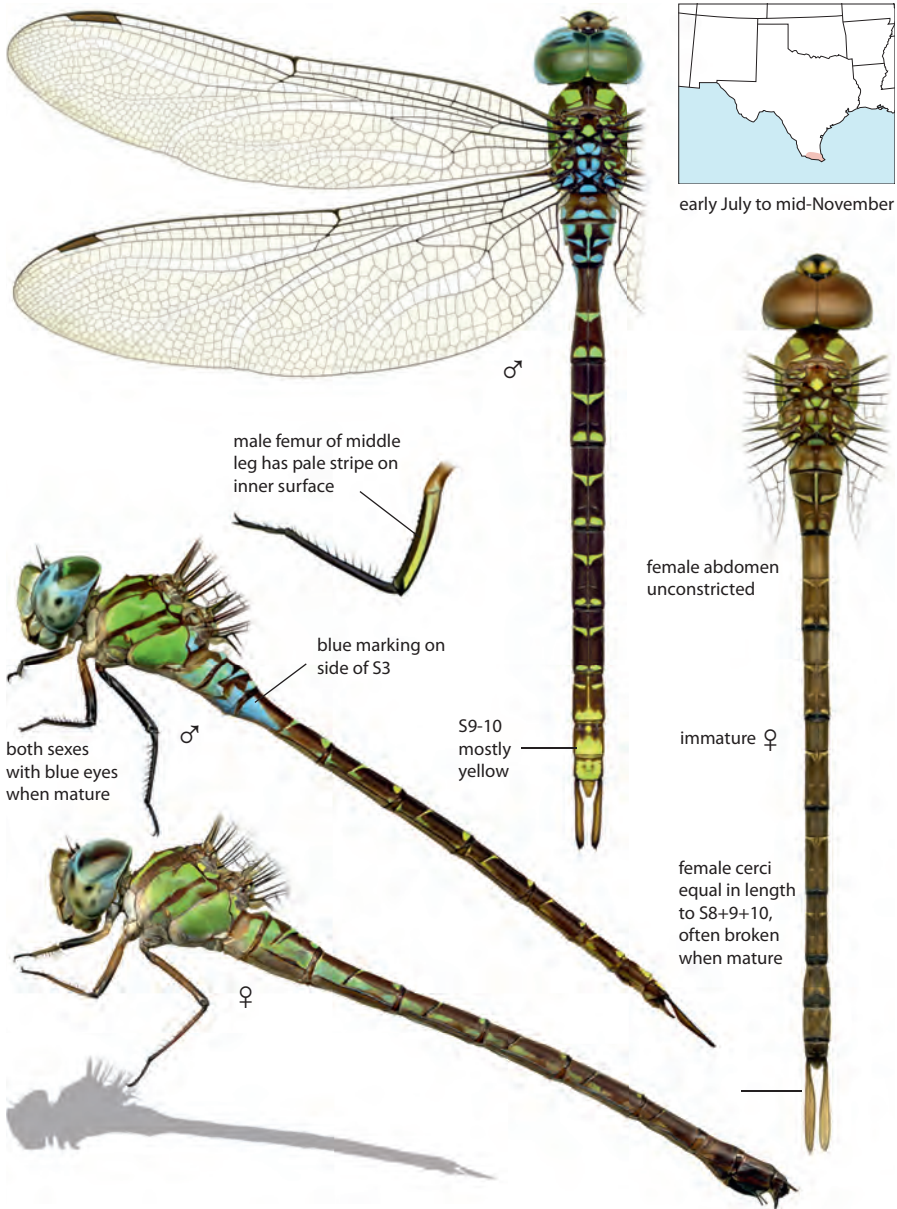
62–75 mm, 2.4–3 in. Slender forest-dwelling darner of the southeastern coastal plain; breeds at temporary forest pools. Thorax mostly green with brown stripes; shoulder stripe widest. Abdomen dark with small green markings. Hangs in deep shade during the day, feeding at dusk.



**Similar species:** **Blue-faced** and **Mangrove Darners** lack brown shoulder stripes; thoraxes almost entirely green. **Regal Darner** much larger, has wide brown lateral thoracic stripe and abdomen unconstricted. See **Caribbean Darner**.

## Caribbean Darner *Tridepthysynca caribbea*

57–67 mm, 2.25–2.6 in. Slender crepuscular darner inhabiting forest pools and swamps. Rare in South Texas. Similar to Phantom Darner, but tip of male abdomen yellow-green above; female abdomen not constricted. Hangs and perches vertically in shade on branches and tree trunks.

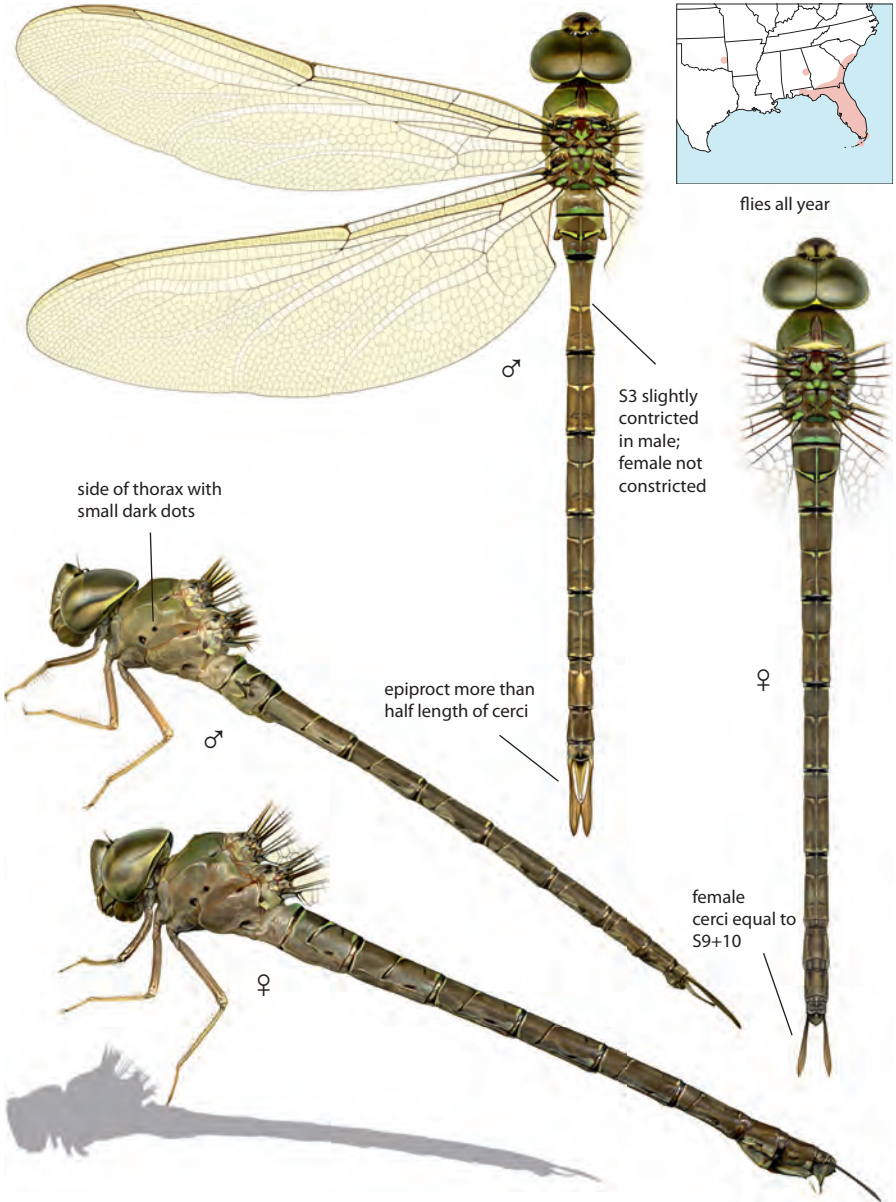


early July to mid-November

**Similar species:** **Phantom Darner** very similar, but no known range overlap. Male has tip of the abdomen dark; female with abdomen constricted at S3 and has longer cerci. **Pale-green** and **Blue-faced Darners** lack wide dark thoracic stripes.

## Twilight Darner *Gynacantha neivosa*

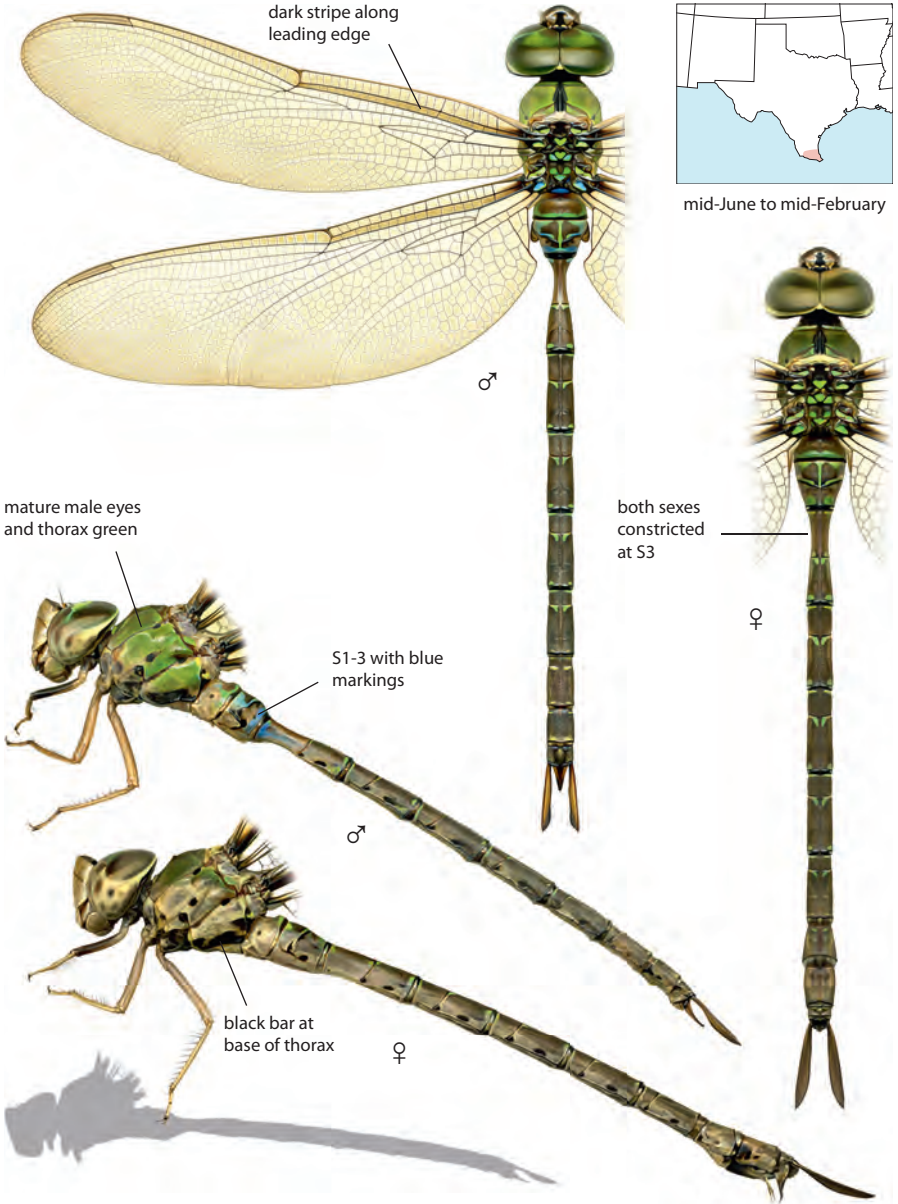
75–80 mm, 3–3.15 in. Slender, dull brown darner inhabiting shaded pools and swamps. Southeastern. Thorax plain with only small lateral dots; thorax top and front greenish when mature. Abdomen dull brown with inconspicuous pale dorsal markings. Crepuscular, roosts in forest undergrowth by day but may be active at dawn and on cloudy days.



**Similar species:** **Bar-sided Darner** has dark lateral thoracic stripe; female with S3 constricted, but range not known to overlap with Twilight Darner in North America. **Pale-green Darner** has a greener thorax with no dark lateral spots.

## Bar-sided Darner • *Gynacantha mexicana*

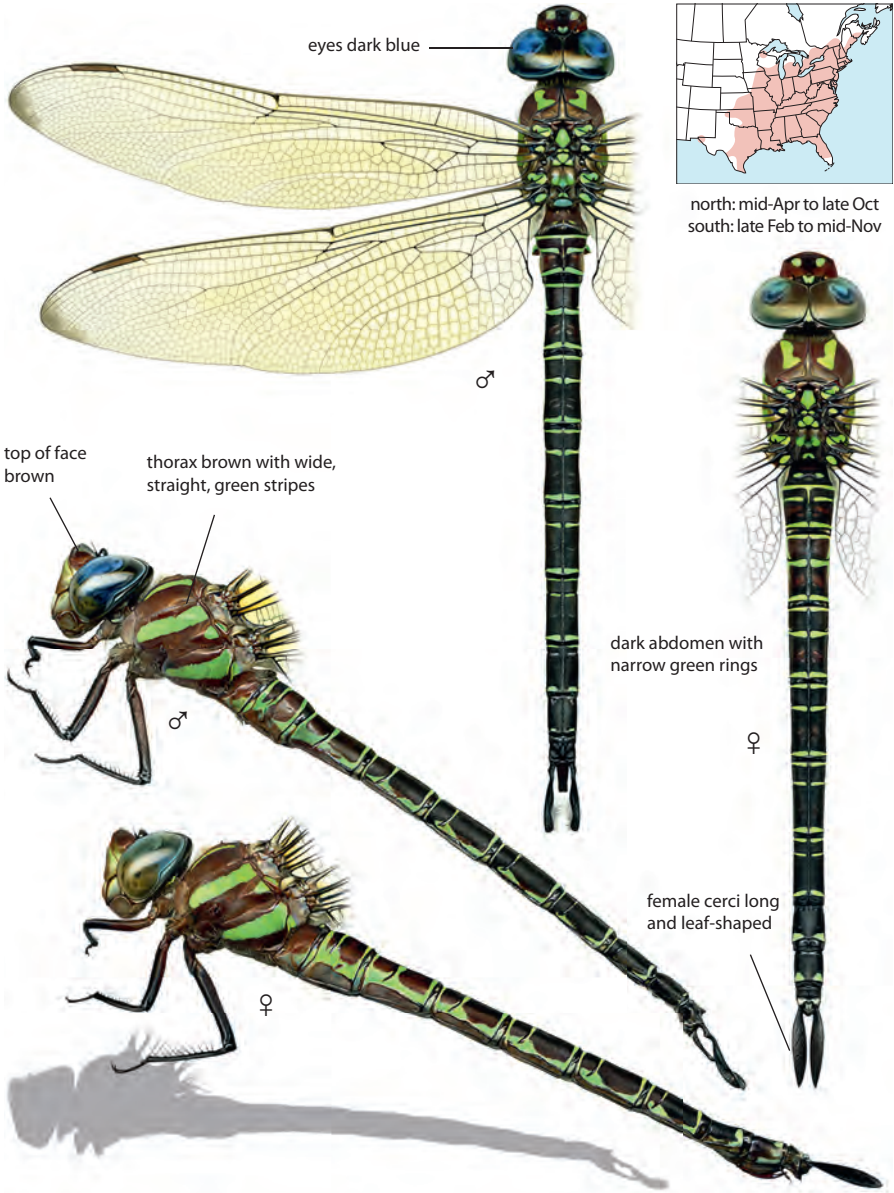
70–76 mm, 2.74–3 in. Slender greenish-brown darner found in southernmost Texas. Crepuscular; roosts in woodlands during the day and breeds in temporary pools. Similar to Twilight Darner but has dark stripe on rear lateral margin of the thorax. Wings often with dark stripe along leading edge.



**Similar species:** **Twilight Darner** lacks dark lateral thoracic stripe, female abdomen not constricted, and range not known to overlap with Bar-sided Darner in North America. **Pale-green Darner** lacks dark lateral thoracic stripe.

## Swamp Darner *Epiplatys hageni*

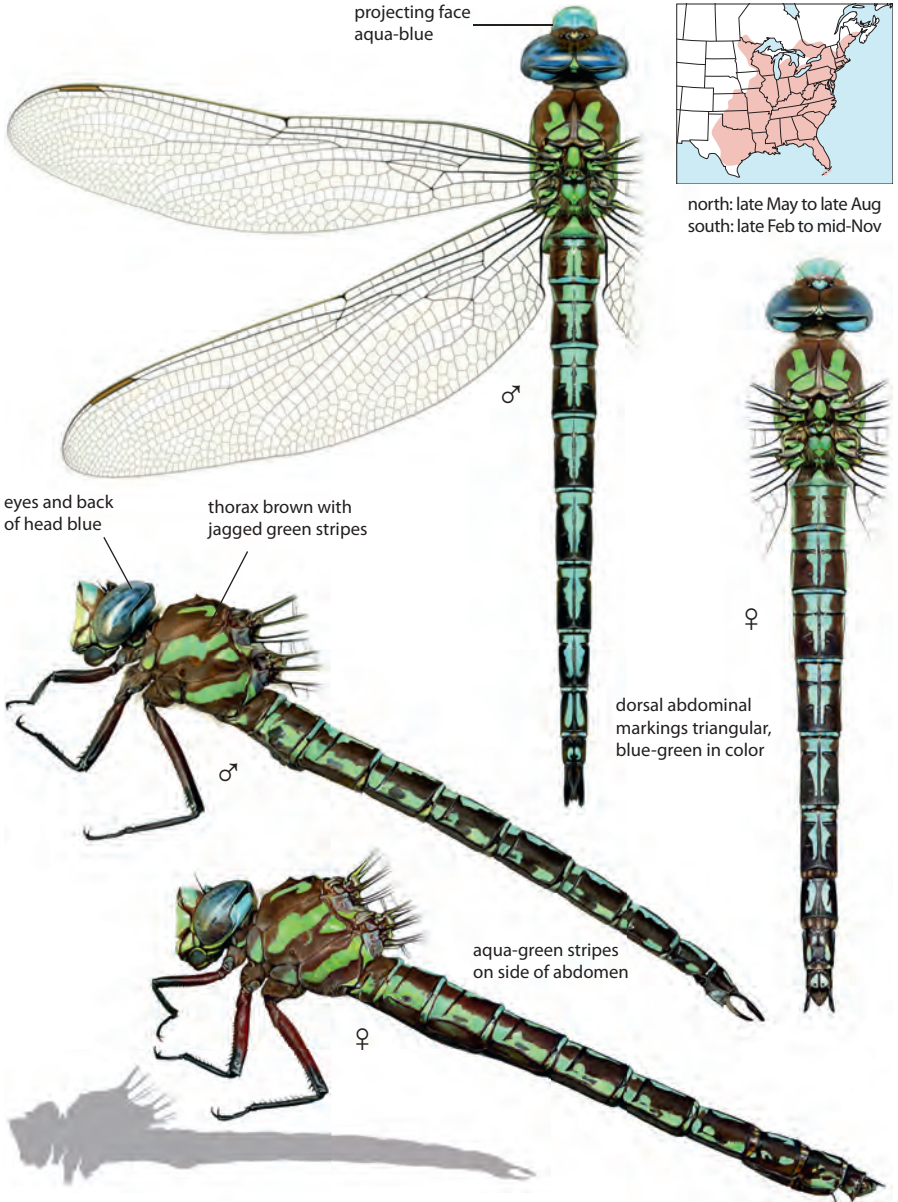
82–91 mm, 3.2–3.6 in. One of our largest dragonflies; common at swamps, slow streams, and woodland ponds, including temporary ones. Eastern. Thorax dark brown with wide, green, straight stripes; abdomen dark with narrow green rings. Eyes dark blue when mature. Top of face brown.



**Similar species:** **Regal Darner** has paler thorax, with wider green stripes and narrower brown ones. Face green. **Cyrano Darner** has striped abdomen and pale blue face.

## Cyrano Darner *Nisuschna pentatentia*

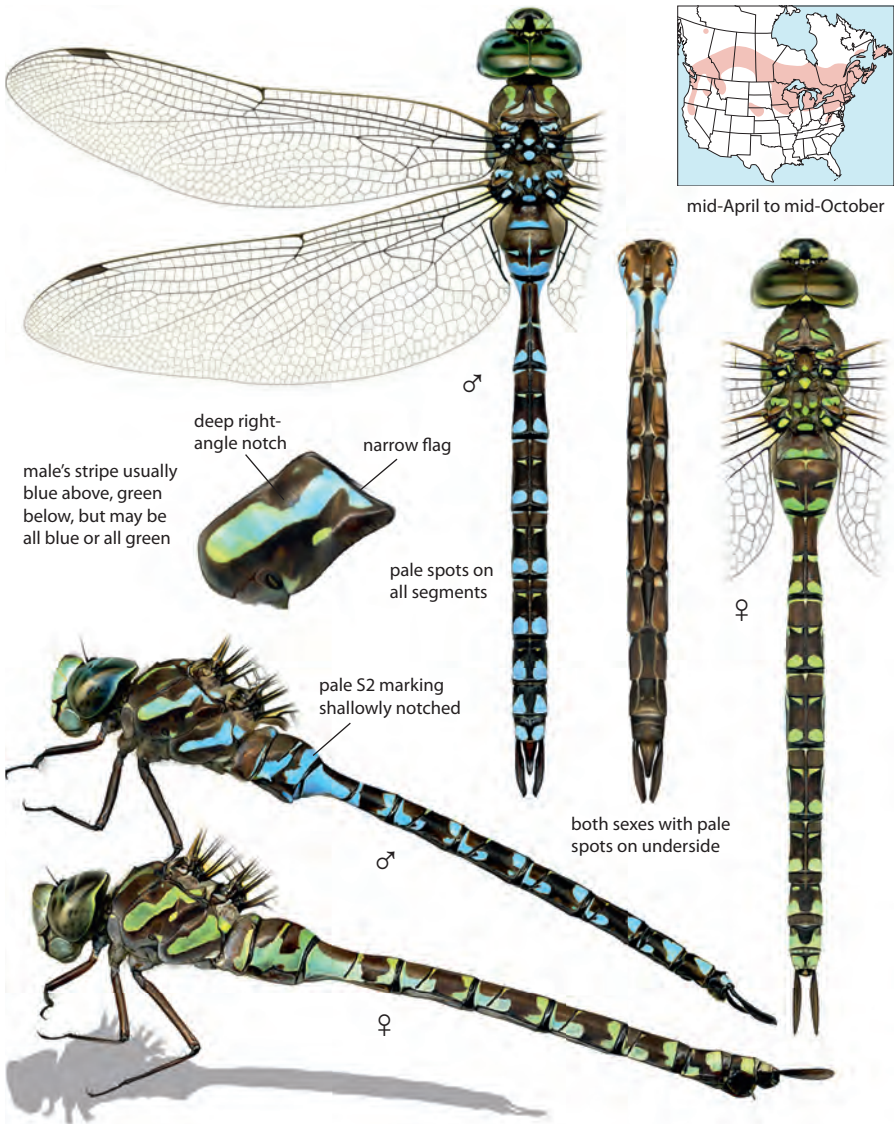
62–73 mm, 2.4–2.9 in. Large eastern darner found at swamps, slow streams, also lakes and ponds. Thorax dark brown with jagged green stripes; abdomen with blue-green stripes. Eyes and back of head blue. Face aqua-blue with projecting frons. Males fly short patrols over water, often with abdomen slightly curved, creating a humped appearance.



**Similar species:** Regal and Swamp Darners have ringed abdomen. Mosaic darners have spotted abdomens.

## Canada Darner *Aeshna canadensis*

68–74 mm, 2.7–2.9 in. Common mosaic darner at vegetated lakes, beaver ponds, and bogs. Shape of lateral thoracic stripes distinctive; anterior stripe with right-angle notch and narrow flag. No dark stripe on face. Male cerci simple-type. Females may have blue or green abdominal markings, often in combination, with green above and blue on sides.

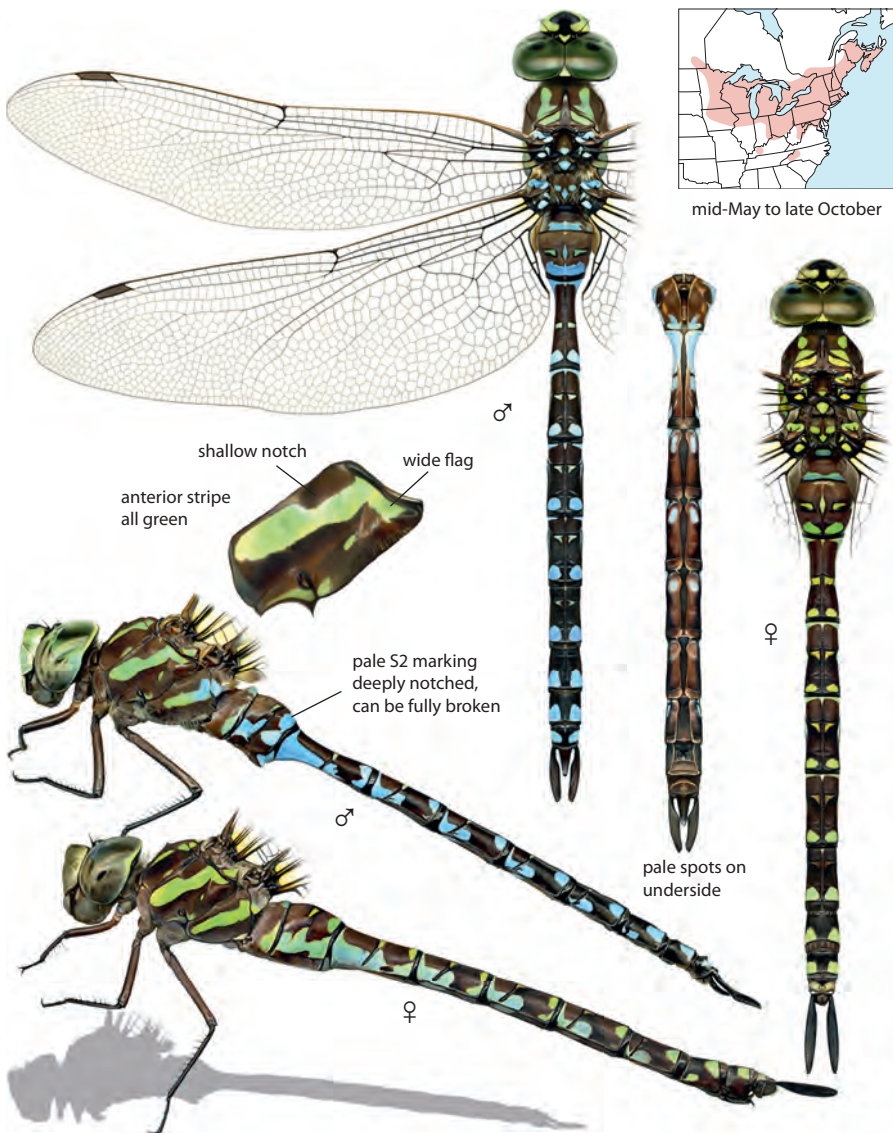


**Similar species:** **Green-striped Darner** nearly identical. Anterior lateral thoracic stripe with shallower notch and wider dorsal flag; male's stripe all green. Pale markings on S2 deeply notched. See Green-striped Darner for further in-hand identification. **Lake Darner** has dark facial stripe. Anterior lateral thoracic stripe constricted in middle; lacks pale spots on underside of abdomen. **Lance-tipped Darner** has anterior lateral thoracic stripe only slightly notched. Male cerci wedge-type; female cerci wide, lance-shaped.



## Green-striped Darner *Aeshna verticalis*

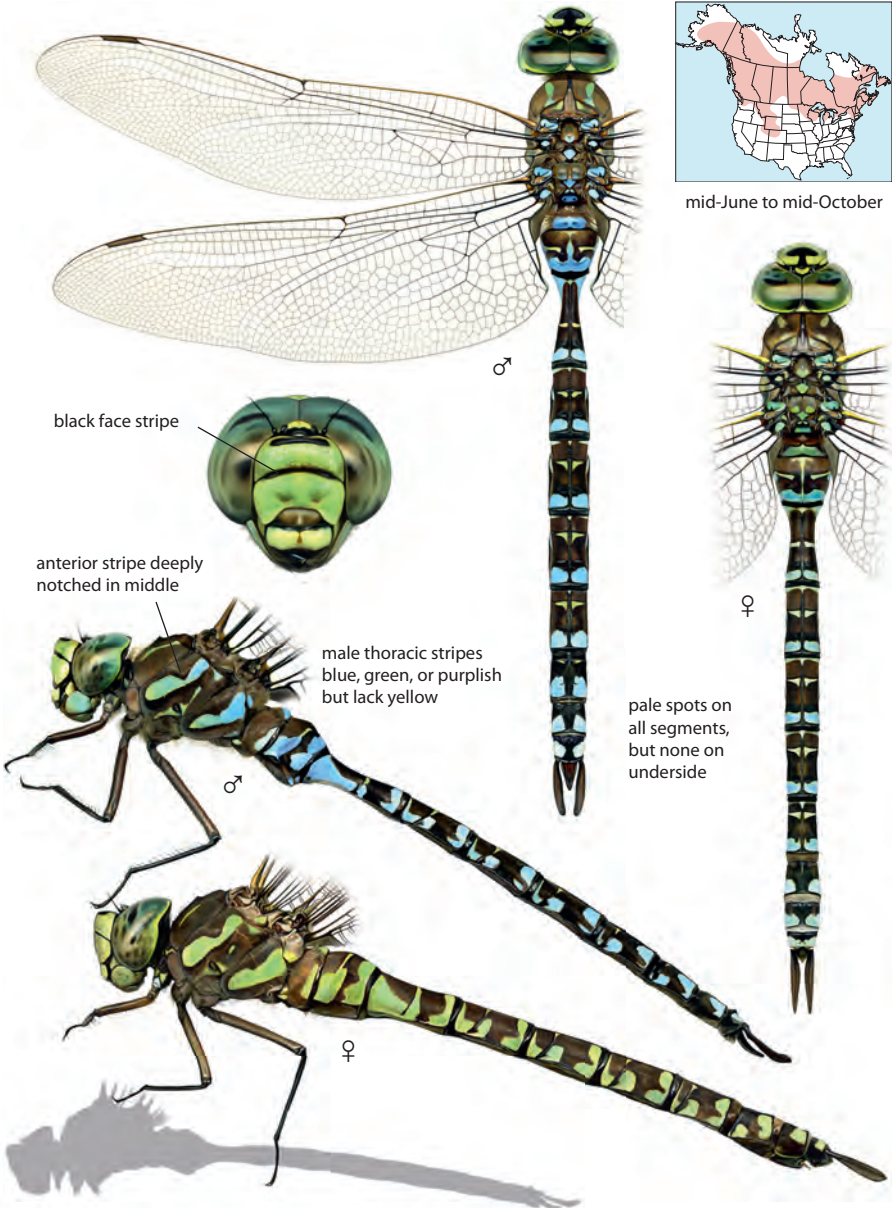
74–79 mm, 2.9–3.1 in. Northeastern mosaic darter found at vegetated ponds, lakes, and slow streams. Nearly identical to Canada Darner, but anterior lateral thoracic stripe entirely green, shallowly notched, and has wide dorsal flag. No dark stripe on face. Male cerci simple-type.



**Similar species:** **Canada Darner** nearly identical but usually separable by shape of the anterior lateral thoracic stripe. On occasion, pattern and color may be inconclusive, requiring examination of anatomical structures. Male Canada has a row of tiny teeth along the top of the cerci that Green-striped lacks. Also compare shape of hamules and structure of ovipositors, page 393. **Lake Darner** has dark facial stripe. Anterior lateral thoracic stripe constricted in middle; lacks pale spots on underside of abdomen.

## Lake Darner *Aeshna eremita*

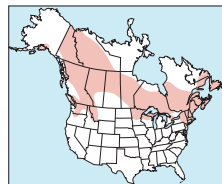
74–79 mm, 2.9–3.1 in. Large northern mosaic darner common at wooded and marshy lakes, also large ponds and slow streams. Anterior lateral thoracic stripe deeply notched in the middle. Face with narrow black cross-stripe. Male cerci simple-type.



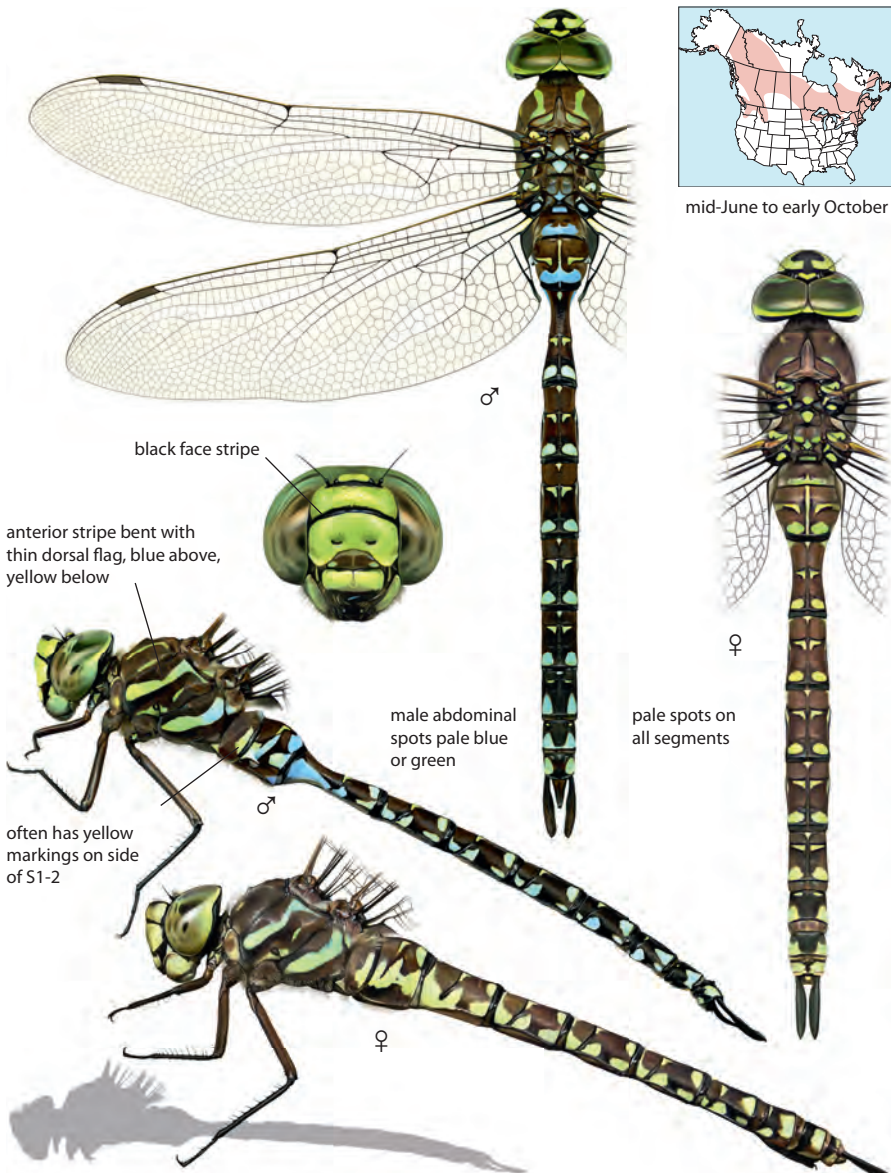
**Similar species:** **Canada** and **Green-striped Darners** with anterior thoracic stripe more shallowly notched, pale spots on the underside of the abdomen; lack black facial stripe.

## Subarctic Darner • *Aeshna subarctica*

66–76 mm, 2.6–3 in. Small pastel-colored mosaic darner found at northern mossy bogs and fens. Anterior lateral thoracic stripe narrowed in the middle, appears bent, and has thin dorsal flag. Face with black cross-stripe. Male cerci simple-type.



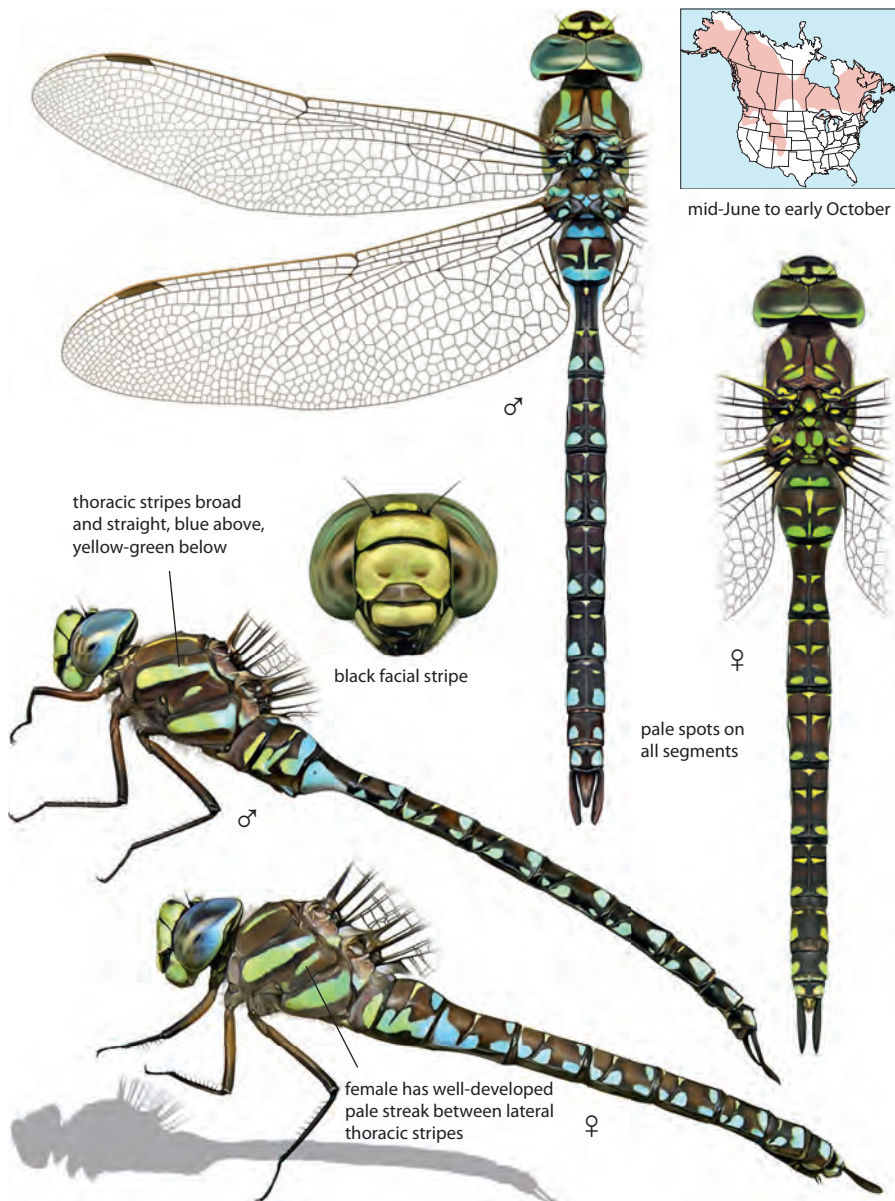
mid-June to early October



**Similar species:** **Sedge Darner** has wider straight lateral thoracic stripes. **Canada, Green-striped,** and **Lake Darners** have deeply notched anterior lateral thoracic stripes. **Shadow Darner** has straight lateral thoracic stripes; male with wedge-type cerci and no dark facial stripe.

## Sedge Darner *Aeshna juncea*

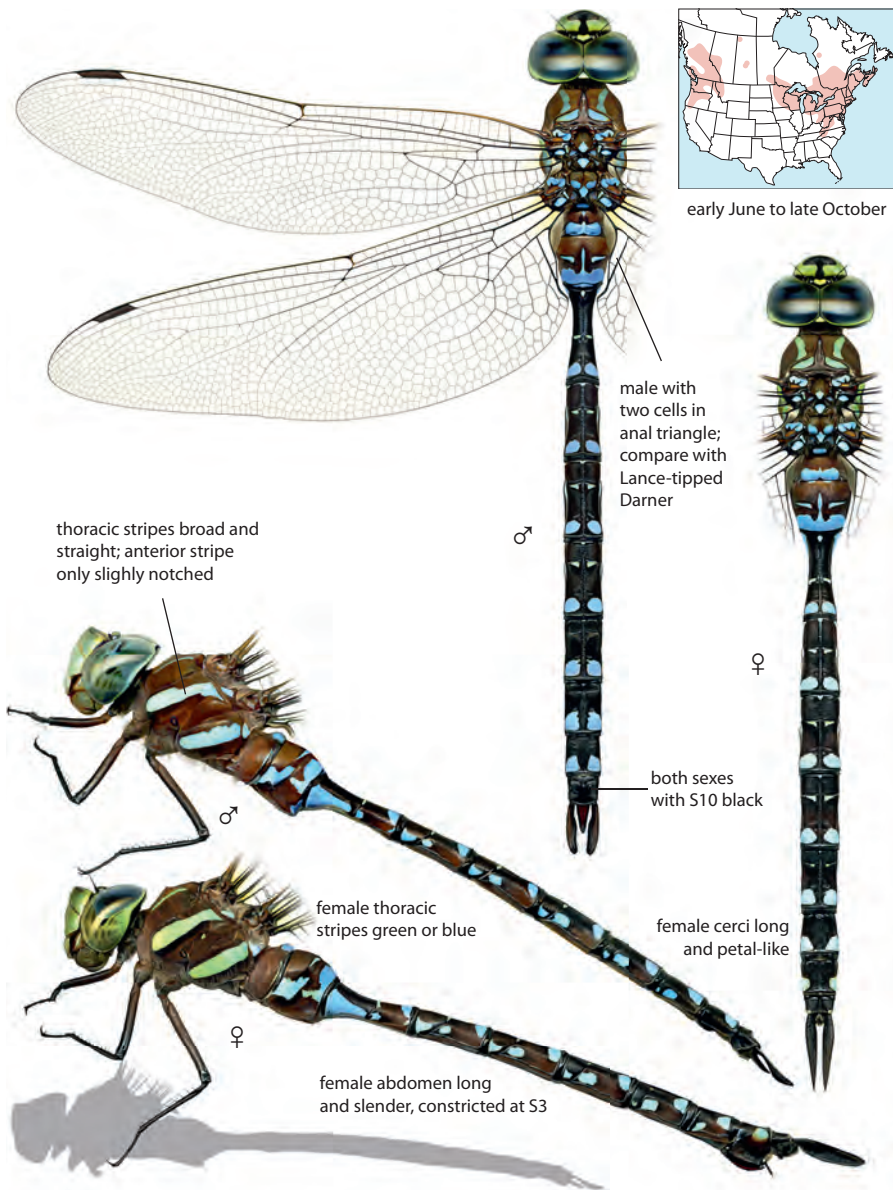
66–75 mm, 2.6–2.95 in. Common and widespread northern mosaic darner found at sedge marshes, lakes, and peat ponds. Thorax with full-length frontal stripes. Lateral thoracic stripes broad and straight, anterior stripe widest at bottom. Face with black cross-stripe. Male cerci simple-type.



**Similar species:** **Subarctic Darner** has narrower, bent lateral thoracic stripes. **Black-tipped Darner** has S10 black and lacks black facial line. **Shadow** and **Paddle-tailed Darners** have narrower lateral thoracic stripes; males with wedge-type cerci.

## Black-tipped Darner *Aeshna tuberculifera*

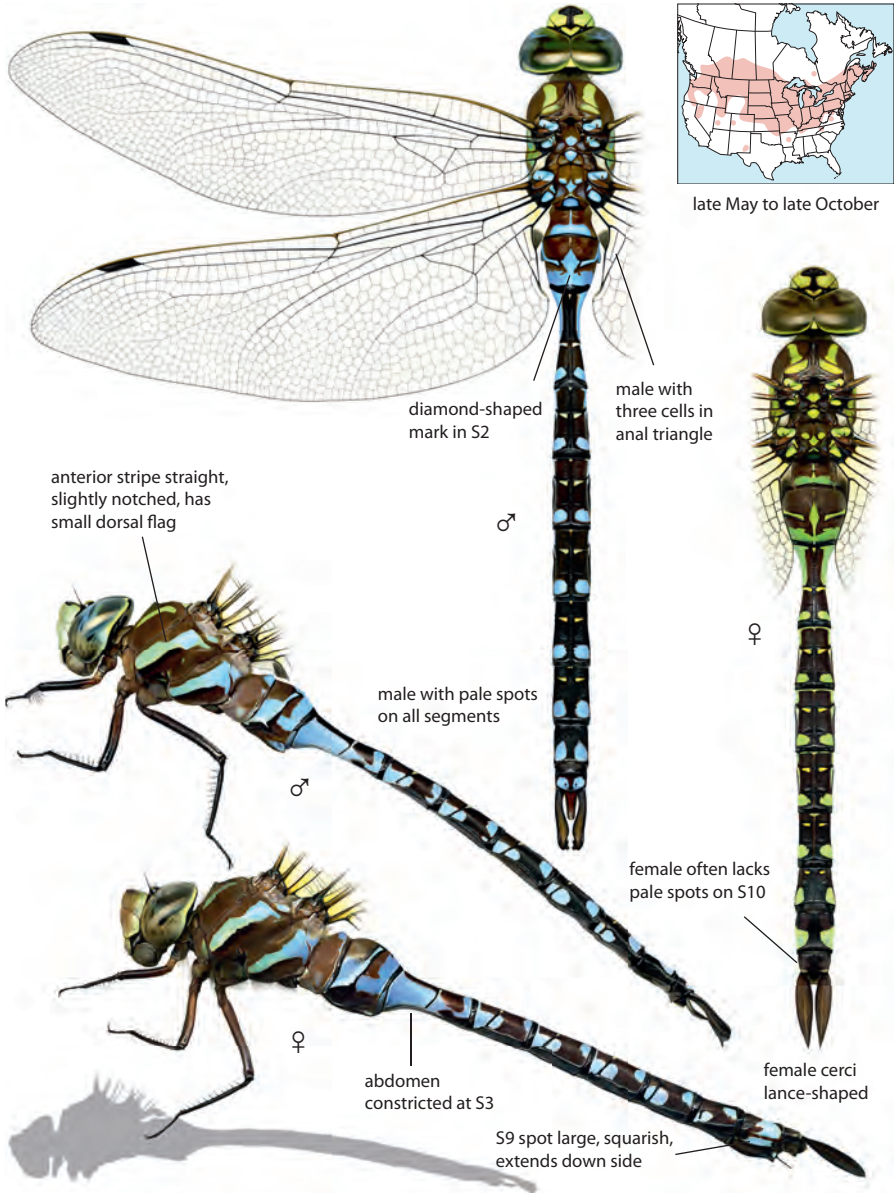
71–80 mm, 2.8–3.15 in. Long and slender darner uncommon at bog-edged ponds and lakes, cattail ponds in the East. Lateral thoracic stripes broad and straight, anterior stripe slightly notched. S10 all black. Male cerci simple-type. Female abdomen long and constricted at S3, with large ovipositor and long broad cerci.



**Similar species:** **Lance-tipped Darner** most similar in pattern, but male has blue spots on S10 and wedge-type cerci; female with large pale spot extending down on side of S9. **Sedge** and **Paddle-tailed Darners** have pale spots on S10 and face with black cross-stripe.

## Lance-tipped Darner *Aeshna conscripta*

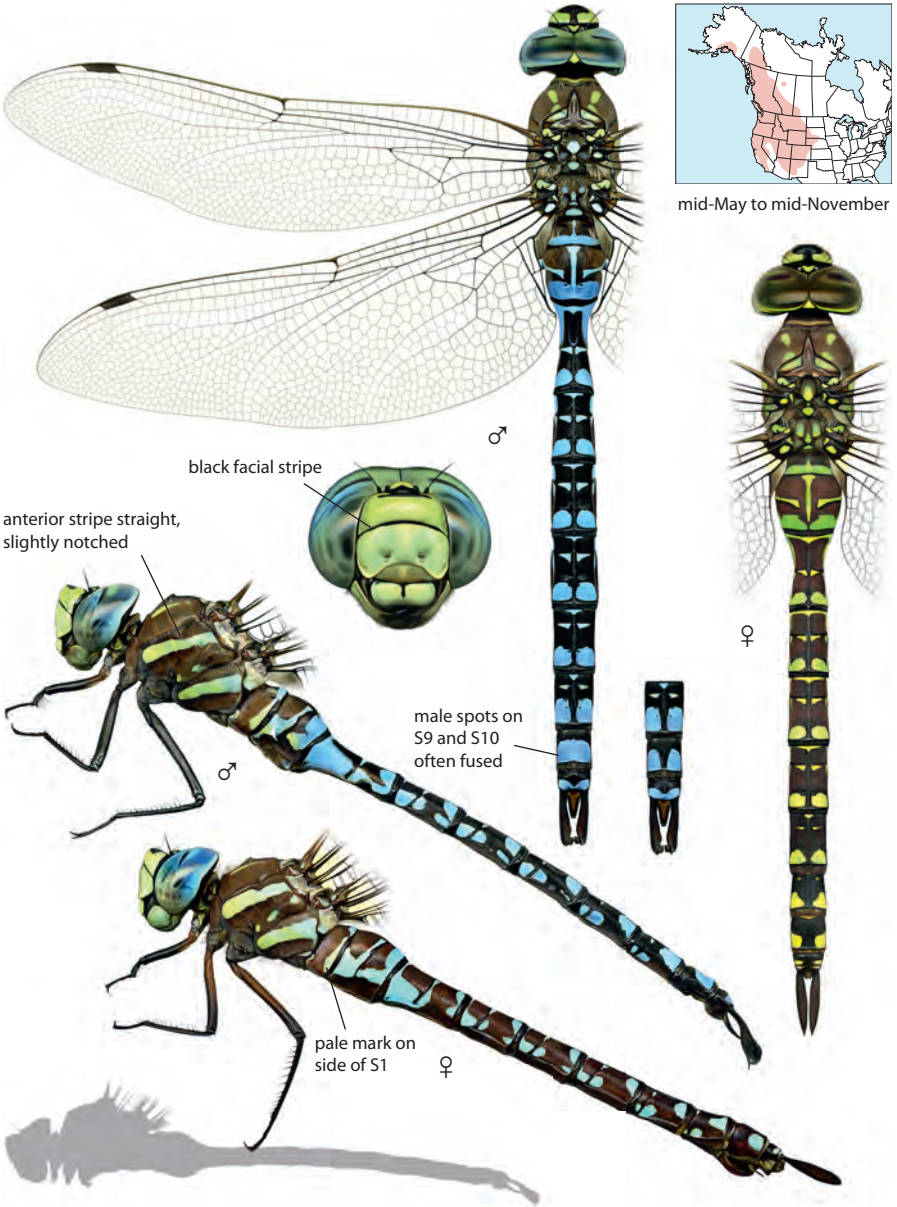
68–72 mm, 2.7–2.8 in. Common mosaic darter at open marshy ponds and slow streams. Anterior lateral thoracic stripe straight, slightly notched, with small dorsal flag. Male cerci wedge-type with spine. Female abdomen often lacks pale spots on S10, but S9 pale marking large, squarish, and extends down side. Female cerci long and lance-shaped.



**Similar species:** **Black-tipped Darner** male has simple-type cerci and no pale spots on S10; female with only small spot on S9. **Paddle-tailed Darner** has black face stripe, larger abdominal spots with S9 spots fused, pale streak on side of S1.

## Paddle-tailed Darner *Aeshna palmata*

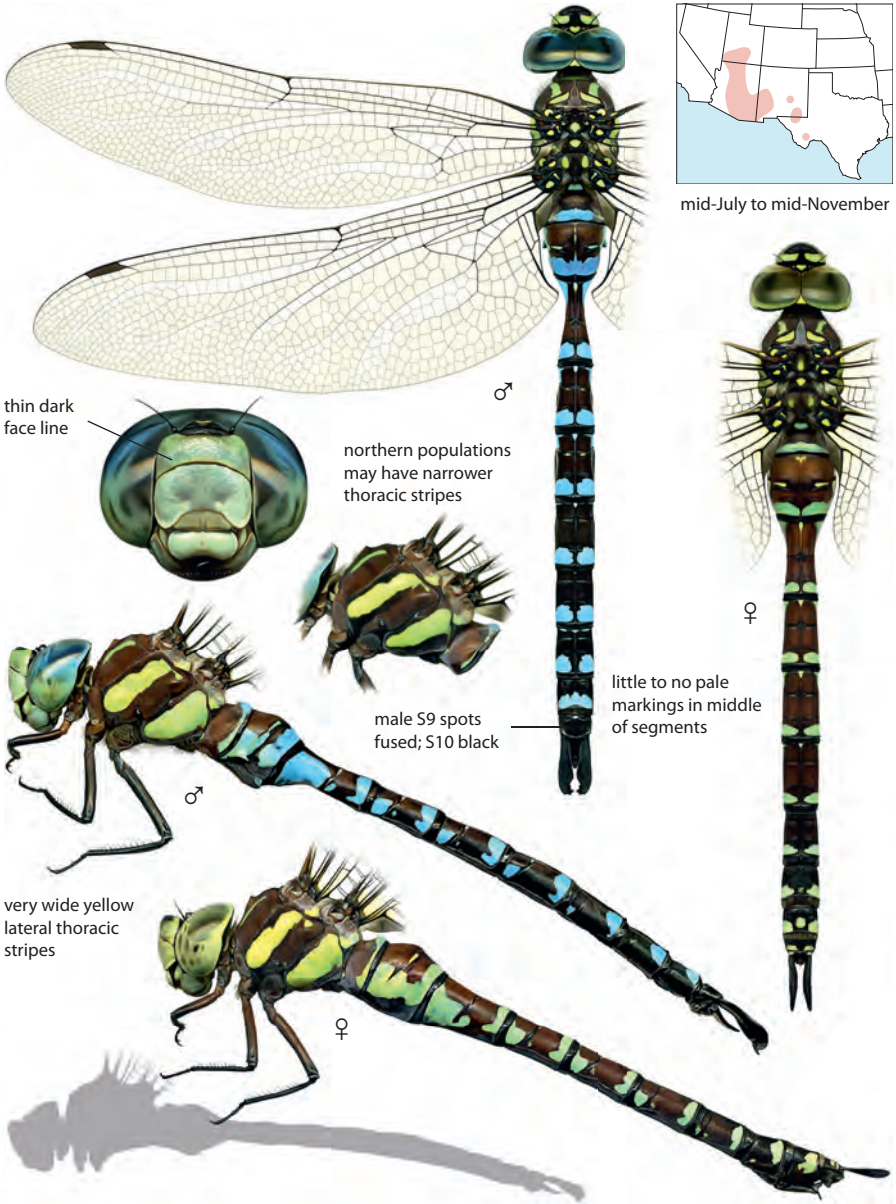
65–75 mm, 2.6–3 in. Common western mosaic damner at ponds, lakes, and slow streams. Anterior lateral thoracic stripe straight, slightly notched. Face with black cross-stripe. Abdomen with large pale markings; S9 spots on male often fused. Pale streak on side of S1. Male cerci wedge-type with spine.



**Similar species:** **Lance-tipped** and **Shadow Darners** have smaller abdominal spots, lack black face stripe and pale streak on side of S1. **Persephone's Darner** has wider thoracic stripes; S10 black.

## Persephone's Darner *Aeshna persephone*

74–79 mm, 2.9–3.1 in. Southwestern species inhabiting mountain streams. Lateral thoracic stripes very wide, straight, and yellow in color. Abdomen dark with ringed appearance; pale abdominal markings largely absent in the middle of segments, reduced laterally, and reduced or absent on S10. Male cerci wedge-type with spine.

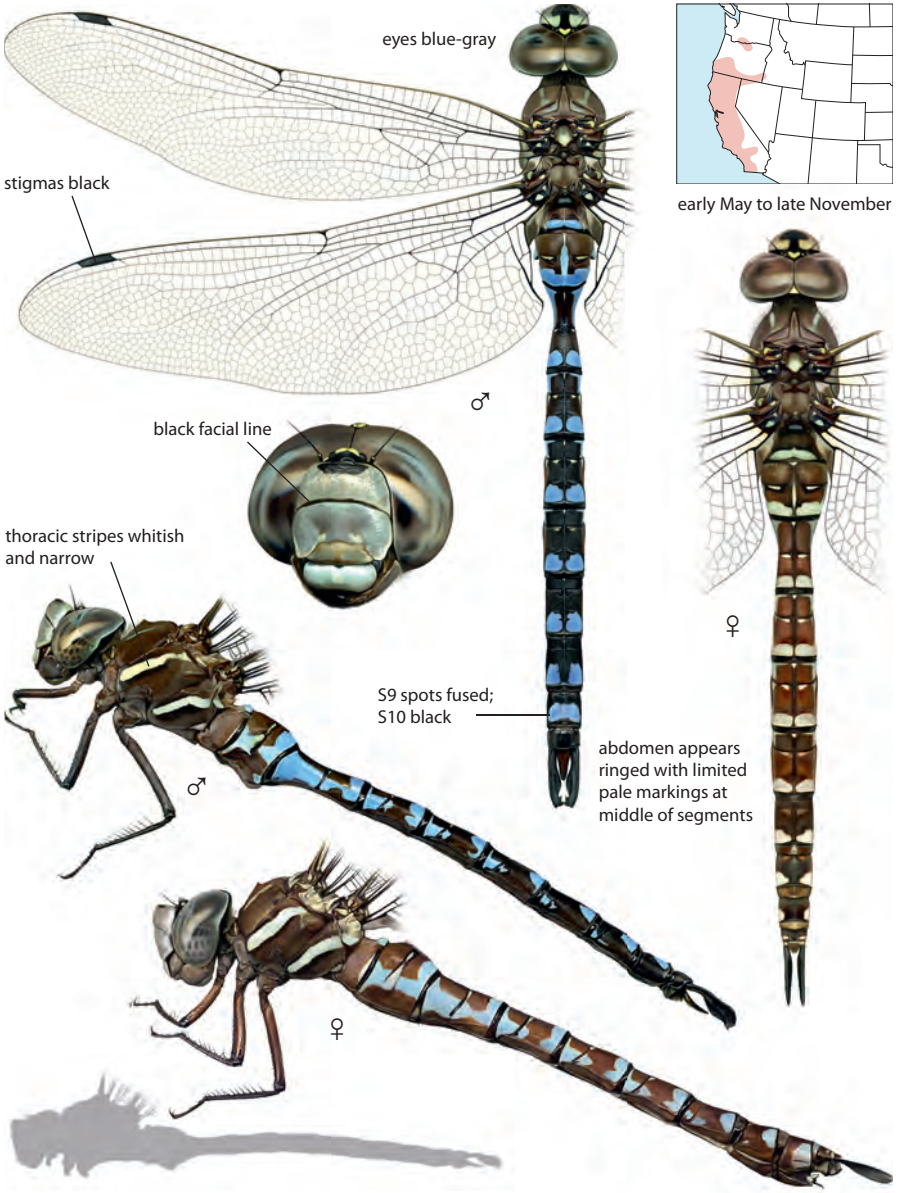


**Similar species:** **Paddle-tailed Darner** has narrower lateral thoracic stripes and pale markings at middle of abdominal segments, on sides of S7-8, and on S10. **Walker's Darner** has narrow, whitish lateral thoracic stripes.



**Walker's Darner** *Aeshna walkerii*

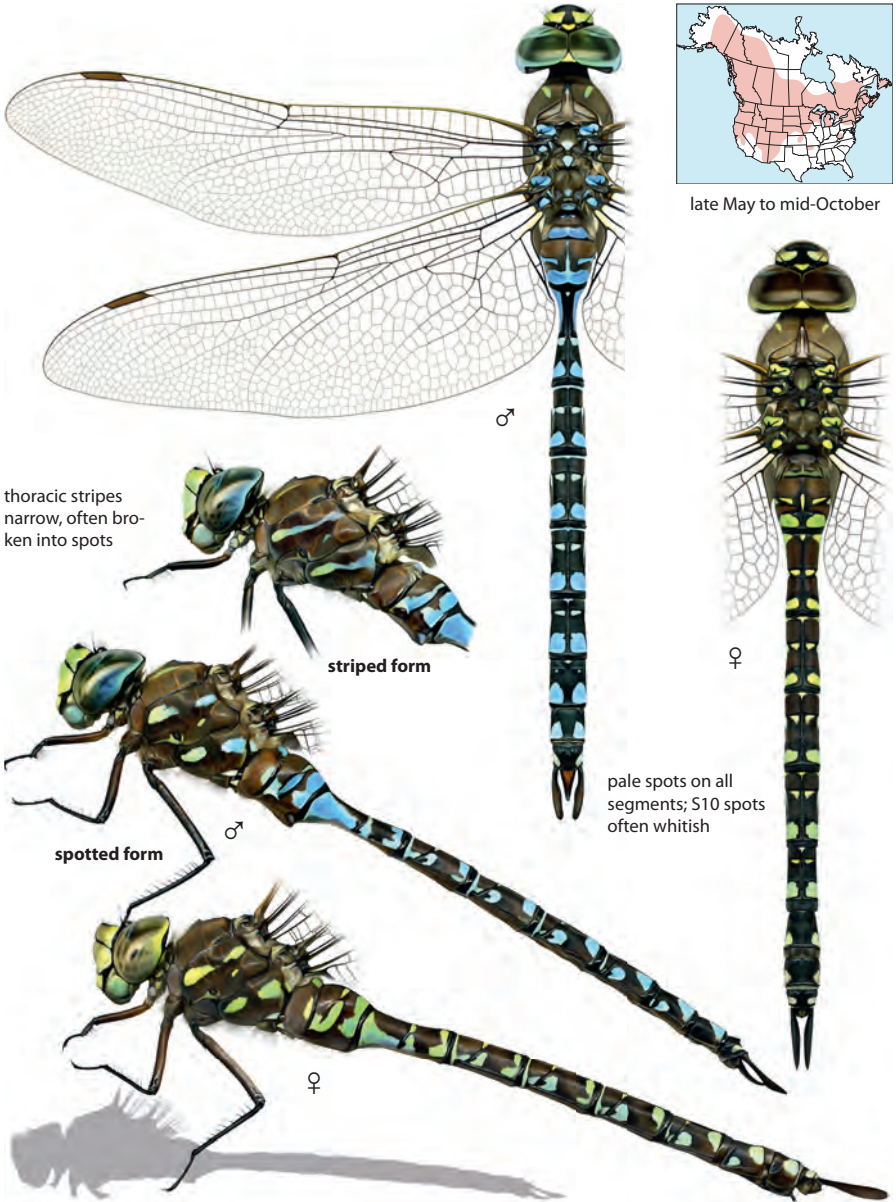
64–66 mm, 2.5–2.6 in. Far-western mosaic darner found at foothill streams, mainly in California. Lateral thoracic stripes narrow, straight, and whitish. Male with S9 dorsal pale stripes fused, S10 unmarked. Male cerci wedge-type with spine.



**Similar species:** **Blue-eyed Darner** has pale markings at middle of abdominal segments. Male has sky-blue eyes and forked cerci; female has tubercle under S2. **Shadow Darner** has yellow-green lateral thoracic stripes, no black facial stripe.

## Variable Darner *Aeshna interrupta*

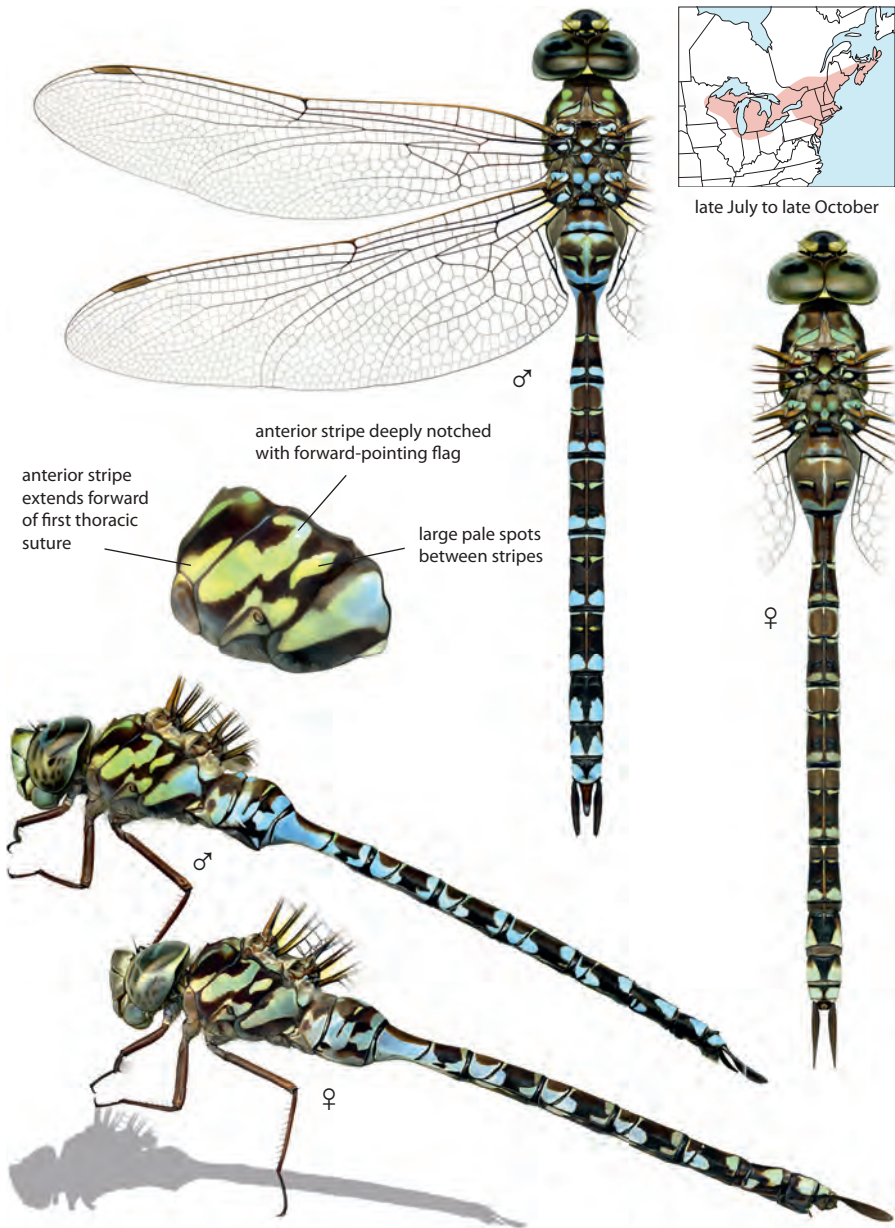
72–77 mm, 2.8–3 in. Widespread common species at lakes and ponds, often with abundant shoreline vegetation. Reduced lateral thoracic stripes distinctive. Stripes straight and narrow in western Canada, Rocky Mountains, and Great Plains; stripes reduced to spots in the East and along West Coast. Face with black cross-line. Male cerci simple-type.



**Similar species:** **Blue-eyed Darner** female resembles striped-form Variable but has tubercle under S1. **Shadow Darner** has smaller pale abdominal markings with pale spots on the underside; male cerci wedge-type. Other **mosaic darners** have wider thoracic stripes.

## Mottled Darner *Aeshna depsydra*

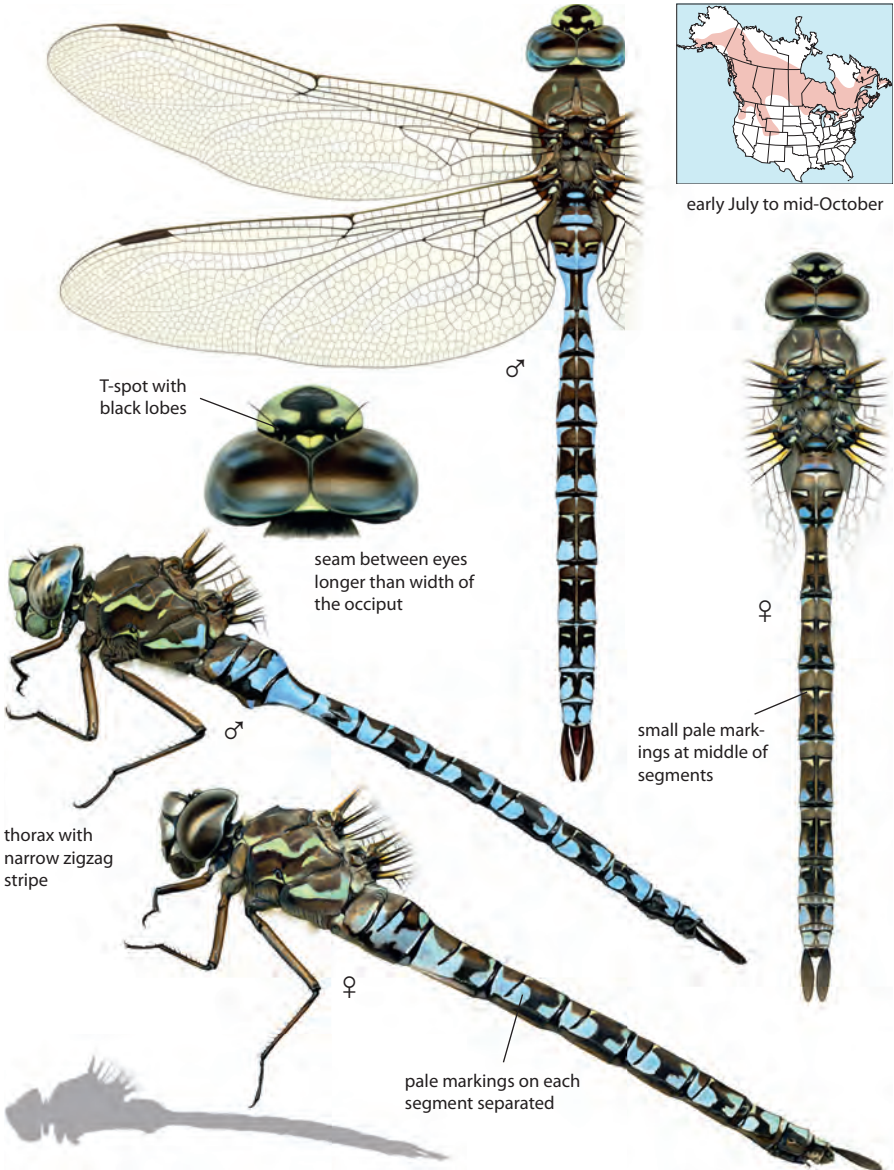
65–70 mm, 2.6–2.75 in. Large common northeastern species at vegetated lakes, beaver ponds, and bogs. Lateral thoracic pattern distinctive with large pale spots between anterior and posterior stripes; anterior stripe deeply notched and extends forward of first thoracic suture. Face with brown cross-line. Male cerci simple-type.



**Similar species:** Among mosaic darners, only **Zigzag** and **Azure Darners** have a pale lateral stripe forward of first thoracic suture, but thoracic stripes much narrower.

## Zigzag Darner *Aeshna zosterata*

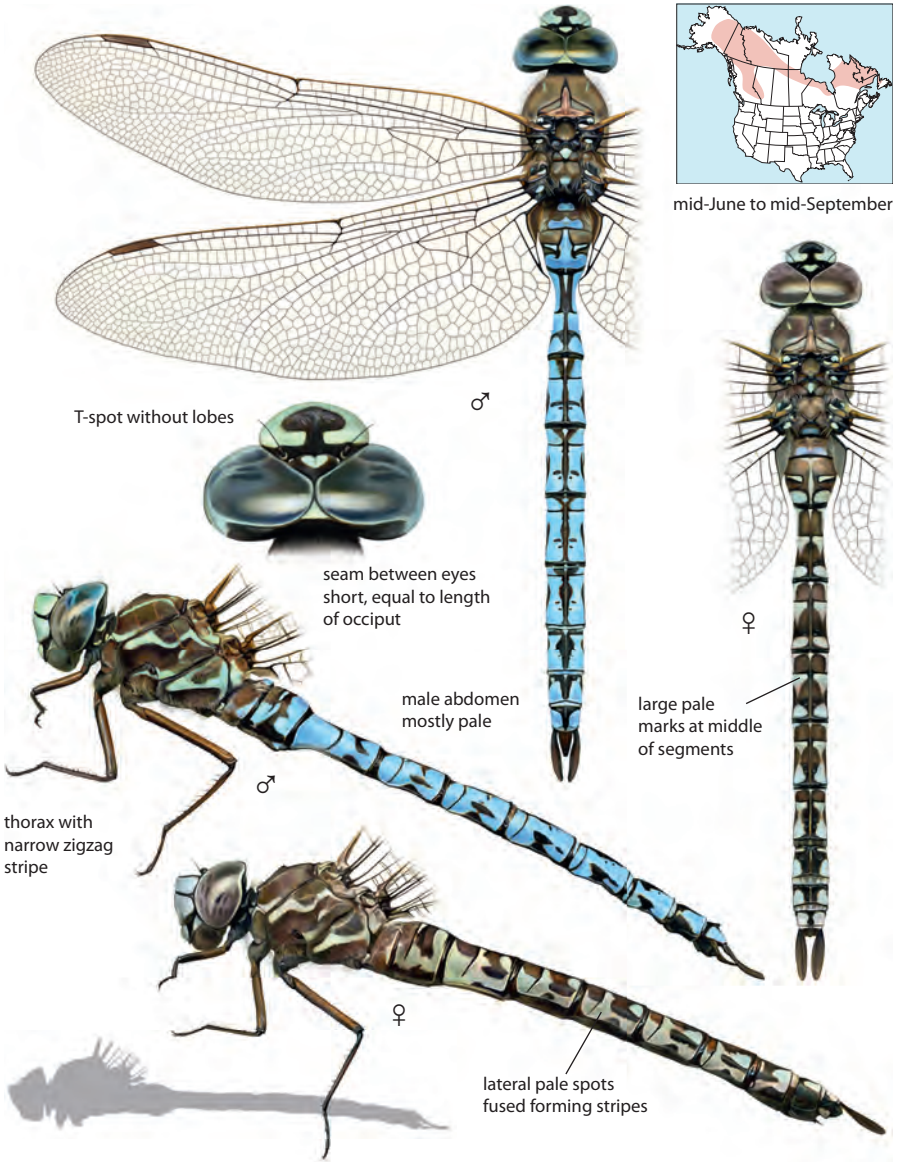
54–64 mm, 2.1–2.5 in. Small northern mosaic darner inhabiting small bog pools and shallow fens vegetated with moss and sedges. Thoracic stripes very narrow; anterior stripe strongly bent, forming a zigzag pattern. Abdominal segments mostly dark above. Face pale yellow with black cross-stripe. Perches low, often on logs or flat on the ground.



**Similar species:** **Azure Darner** has mostly pale abdomen; pale spots often fused, forming stripes. T-spot pattern on frons lacks black lobes.

## Azure Darter *Aeshna caerulea septentrionalis*

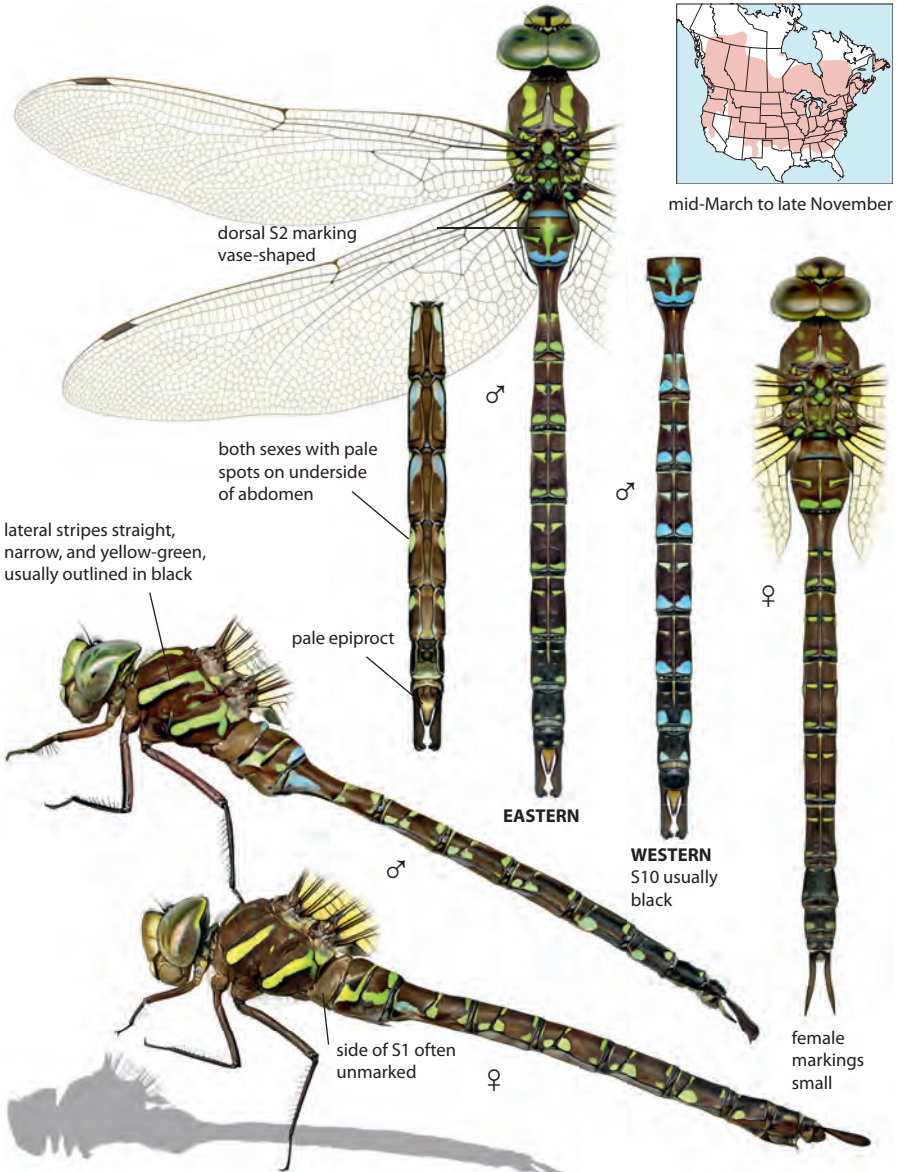
53–61 mm, 2.1–2.4 in. Small far-northern mosaic darter inhabiting mossy bogs and fens. Ranges farther north than any other North American dragonfly. Thoracic pattern similar to Zigzag Darter. Abdomen mostly pale above. Face pale blue or green with black cross-stripe. Flies and perches low, often flat on moss mats.



**Similar species:** Zigzag Darter has darker abdomen with separated pale spots. T-spot on frons with black lobes.

## Shadow Darner *Aeshna umbrosa*

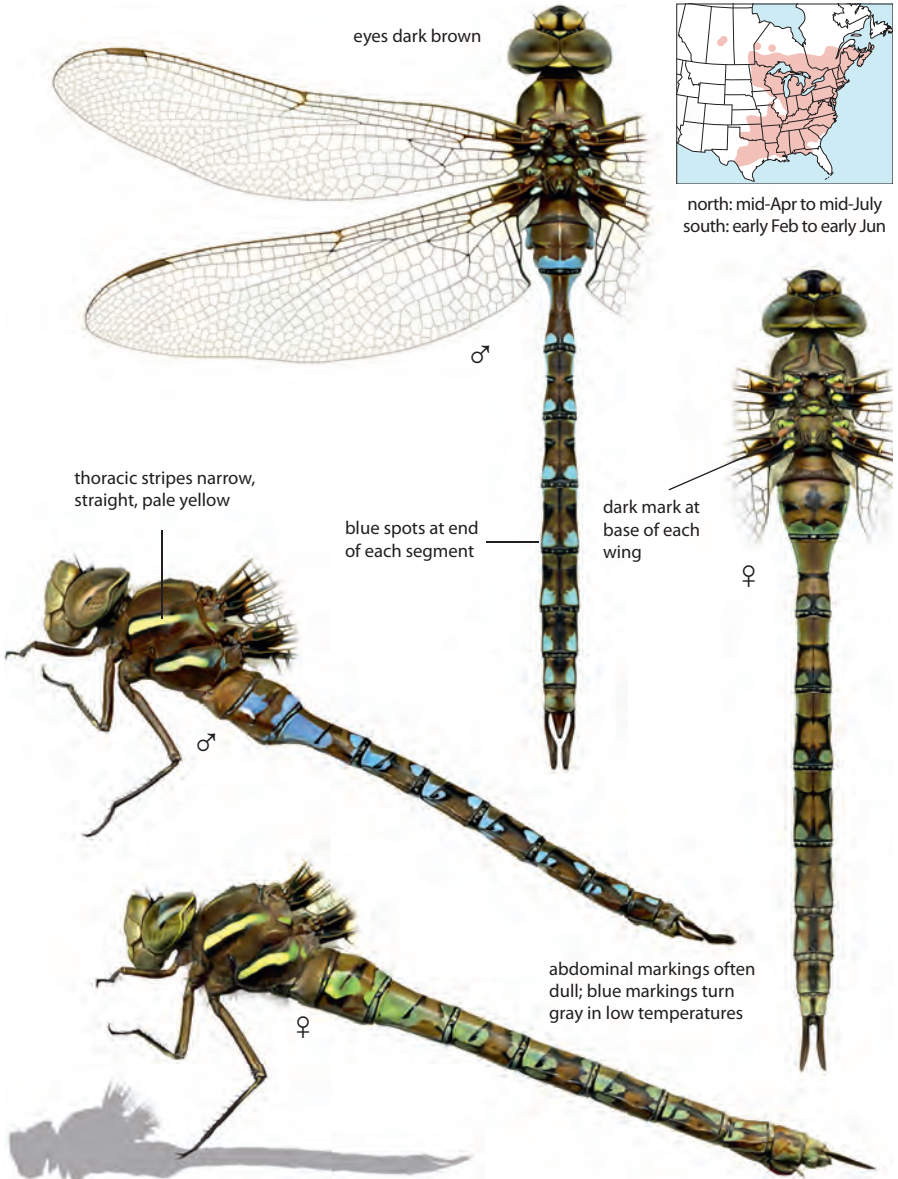
68–78 mm, 2.7–3.1 in. Common and widespread mosaic darner inhabiting slow forest streams and ponds. Lateral thoracic stripes narrow, straight, yellow-green in color. Eastern form has small green abdominal spots; western male has larger blue abdominal spots. Male cerci wedge-type. Male cerci wedge-type.



**Similar species:** Combination of straight green thoracic stripes and small abdominal markings distinctive, particularly in the East. **Paddle-tailed Darner** has wider thoracic stripes, larger abdominal pale markings, including markings on S10, and black face stripe; lacks pale markings on underside of abdomen.

## Springtime Darner *Basiaeschna jahata*

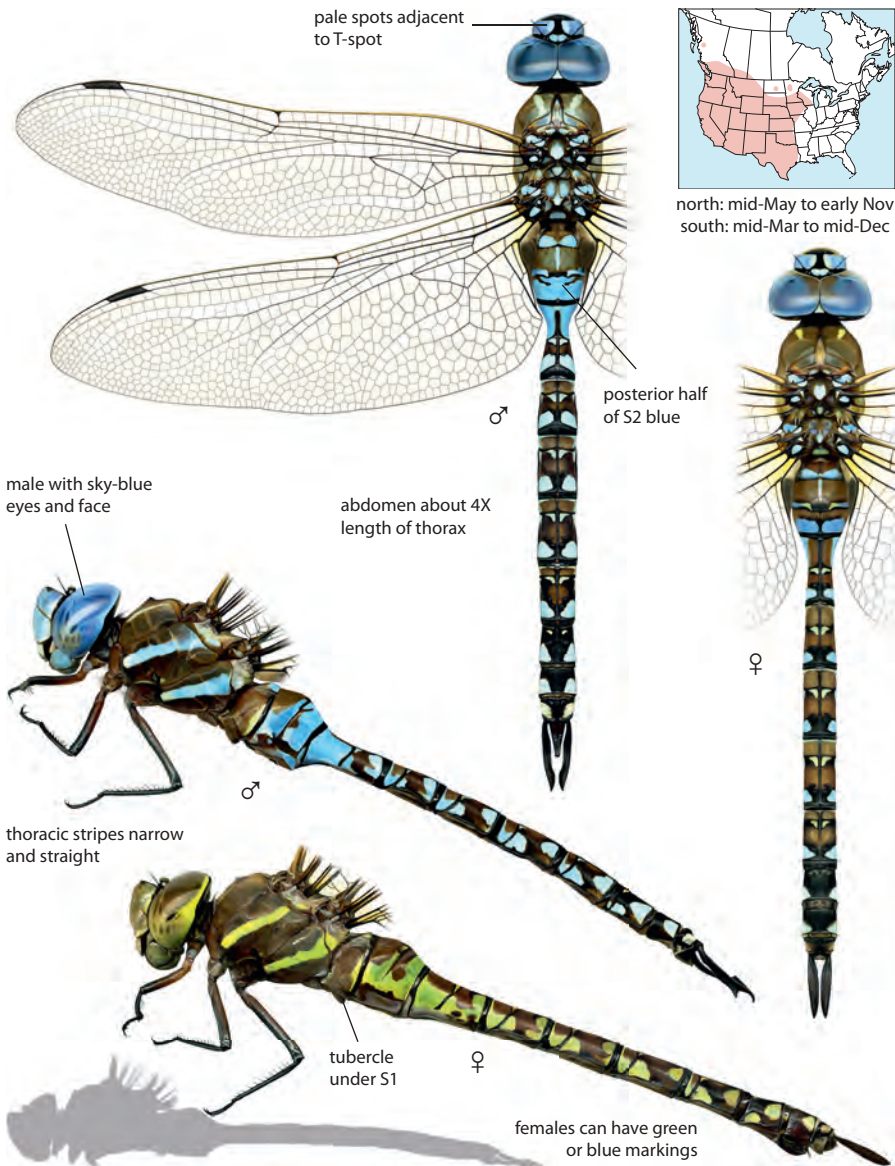
50–67 mm, 2–2.6 in. Eastern early-season darner found at gentle-flowing rivers and streams. Thorax brown with contrasting pale yellow lateral stripes. Abdomen with pale spots, blue in male, blue or green in female. Small, dark brown marking at the base of each wing.



**Similar species:** **Mosaic darners** have later flight seasons, lack dark markings at base of the wings. **Spatterdock Darner** larger; has blue or green thoracic stripes, pale face and eyes and lacks dark wing markings.

## Blue-eyed Darner *Rhyocentrus multicolor*

68–72 mm, 2.7–2.8 in. Common western darter found at lowland lakes, ponds, and slow streams. Mature male with sky-blue eyes, face, and body markings. Lateral thoracic stripes narrow and straight. Male cerci forked in side view (see page 395). Female may have blue or yellow-green markings.



**Similar species:** **Arroyo Darner** has small dorsal extension on anterior lateral thoracic stripe; arrow-shaped mark and additional blue band on S2. Compare male cerci, page 395. Female Blue-eyed similar to **Shadow**, **Paddle-tailed**, and **Variable Darners** but has tubercle under S1 and pale areas adjacent to T-spot. Also see **California** and **Spatterdock Darners**.



## Species Index

### Common Names

Amberwing 269

Eastern 276

Mexican 275

Slough 277

Baskettail 216

Beaverpond 253

Common 250

Dot-winged 255

Florida 256

Mantled 251

Prince 248

Robust 258

Sepia 257

Slender 254

Spiny 252

Boghaunter 216

Ebony 266

Ringed 267

Clubskimmer 273

Masked 374

Pale-faced 373

Slender 375

Clubtail 80

Arrow 182

Ashy 120

Banner 105

Bayou 102

Beaverpond 116

Blackwater 141

Cherokee 147

Clearlake 126

Cobra 140

Cocoa 136

Columbia 139

Cypress 122

Diminutive 127

Dusky 121

Eastern Least 110

Elusive 185

Gray-green 103

Green-faced 109

Gulf Coast 143

Handsome 135

Harpoon 117

Hodges' 125

Horned 97

Interior Least 111

Jade 101

Lancet 118

Laura's 188

Lilypad 99

Midland 134

Mustached 108

Northern Pygmy 112

Oklahoma 119

Olive 180

Ozark 138

Pacific 131

Piedmont 107

Plains 132

Pronghorn 129

Rapids 115

Riverine 183

Russet-tipped 186

Sable 146

Sandhill 123

Septima's 137

Shining 189

Skillet 144

Spine-crowned 104

Splendid 142

Sulphur-tipped 130

Tamaulipan 133

Tennessee 128

Townes' 184

Twin-striped 106

Southern Pygmy 113

Stillwater 100

Unicorn 98

Westfall's 124

Yellow-sided 190

Zebra 181

Corporal 269

Blue 280

Chalk-fronted 281

White 282

Cruiser 202

Florida 205

Stream 204

Darner 32

Amazon 37

Arroyo 72

Azure 67

Bar-sided 51

Black-tipped 59

Blue-eyed 70

Blue-faced 44

means without prior written permission of the publisher.

- California 73  
Canada 54  
Caribbean 49  
Comet 40  
Common Green 38  
Cyrano 53  
Fawn 76  
Giant 39  
Green-striped 55  
Harlequin 78  
Icarus 45  
Lake 56  
Lance-tipped 60  
Malachite 46  
Mangrove 43  
Mottled 65  
Ocellated 77  
Paddle-tailed 61  
Pale-green 47  
Persephone's 62  
Phantom 48  
Regal 42  
Riffle 75  
Secretive 45  
Sedge 58  
Shadow 68  
Spatterdock 71  
Springtime 69  
Subarctic 57  
Swamp 52  
Taper-tailed 79  
Turquoise-tipped 74  
Twilight 50  
Variable 64  
Walker's 63  
Zigzag 66
- Dasher 272, 273  
    Blue 361  
    Caribbean 363  
    Spot-tailed 364  
    Thornbush 362  
    Three-striped 365
- Dragonhunter 84, 145  
Dragonlet 271  
    Band-winged 336  
    Black-winged 337  
    Little Blue 338  
    Plateau 339  
    Red-faced 342  
    Red-mantled 343
- Emerald 214  
    American 217  
    Brush-tipped 221  
    Calvert's 231  
    Clamp-tipped 230  
    Coppery 245  
    Delicate 225  
    Fine-lined 232  
    Forcipate 226  
    Hine's 236  
    Hudsonian 241  
    Incurvate 227  
    Kennedy's 228  
    Lake 239  
    Mocha 224  
    Mountain 229  
    Muskeg 242  
    Ocellated 220  
    Ozark 235  
    Petite 219  
    Plains 237  
    Quebec 238  
    Racket-tailed 218  
    Ringed 240  
    Ski-tipped 223  
    Texas 234  
    Treeline 244  
    Treetop 233  
    Whitehouse's 243  
    Williamson's 222
- Forcetail 81  
    Broad-striped 88  
    Narrow-striped 89  
    Ringed 90  
    Two-striped 87
- Glider 274  
    Arch-tipped 382  
    Aztec 384  
    Garnet 383  
    Hyacinth 385  
    Spot-winged 381  
    Wandering 380
- Grappletail 83, 114  
Leaftail 81  
    Five-striped 93  
    Four-striped 92  
    West Mexican 91
- Meadowhawk 271  
    Autumn 358  
    Band-winged 350

- Black 141  
Blue-faced 345  
Cardinal 357  
Cherry-faced 348  
Red-veined 354  
Ruby 347  
Saffron-winged 352  
Spot-winged 359  
Striped 355  
Variegated 356  
White-faced 346  
Pennant 270, 271  
Amanda's 325  
Banded 322  
Calico 327  
Double-ringed 320  
Four-spotted 316  
Halloween 328  
Marl 319  
Martha's 321  
Metallic 318  
Ornate 324  
Red-tailed 315  
Red-veined 326  
Tawny 317  
Petal-tail 29  
Black 31  
Gray 30  
Pondhawk 270  
Black 310  
Claret 312  
Eastern 308  
Flame-tailed 313  
Great 307  
Pin-tailed 311  
Western 309  
Ringtail 86  
Black-tailed 178  
Blue-faced 177  
Brimstone 179  
Dashed 174  
Eastern 171  
Serpent 172  
Straight-tipped 176  
White-belted 173  
Yellow-legged 175  
River Cruiser 203  
Allegheny 208  
Bronzed 212  
Georgia 207  
Gilded 210  
Mountain 209  
Royal 211  
Swift 206  
Wabash 203  
Western 213  
Rock Skimmer 273  
Red 370  
Saddlebags 274  
Antillean 390  
Black 386  
Carolina 388  
Red 389  
Sooty 387  
Striped 392  
Vermilion 391  
Sanddragon 85  
Belle's 150  
Common 149  
Gray 148  
Tawny 151  
Scarlet-tail 270  
Mexican 314  
Setwing 273  
Black 366  
Checkered 368  
Mayan 369  
Swift 367  
Shadowdragon 216  
Alabama 264  
Broad-tailed 259  
Cinnamon 265  
Orange 263  
Smoky 262  
Stygian 260  
Umber 261  
Skimmer 268  
Antillean 304  
Bar-winged 293  
Bleached 287  
Carmine 303  
Comanche 289  
Eight-spotted 285  
Elfin 360  
Evening 372  
Filigree 371  
Flame 300  
Four-spotted 298  
Golden-winged 296  
Gray-waisted 306  
Great Blue 291  
Hoary 286

means without prior written permission of the publisher 378

- Neon 301  
Painted 295  
Purple 294  
Red-mantled 299  
Roseate 302  
Scarlet 305  
Slaty 292  
Spangled 288  
Twelve-spotted 284  
Widow 283  
Yellow-sided 290
- Snaketail 86  
Acuminate 163  
Appalachian 160  
Arizona 167  
Bison 170  
Boreal 156  
Brook 154  
Edmund's 158  
Extra-striped 157  
Great Basin 169  
Maine 152  
Pale 166  
Pygmy 164  
Riffle 153  
Rusty 162  
Sinuous 168  
Sioux 155  
Southern 161  
St. Croix 159  
Westfall's 165
- Spiketail 191  
Apache 200  
Arrowhead 192  
Brown 195  
Delta-spotted 194  
Ouachita 198  
Pacific 201  
Sarracenia 199  
Say's 197  
Tiger 196  
Twin-spotted 193
- Spinylegs 82  
Black-shouldered 96  
Flag-tailed 95  
Southeastern 94
- Sundragon 215  
Selys' 247  
Uhler's 246
- Sylph 274
- Jade-striped 377  
Straw-colored 376  
White-tailed 379
- Whiteface 271  
Belted 331  
Boreal 335  
Canada 329  
Crimson-ringed 330  
Dot-tailed 333  
Frosted 332  
Hudsonian 334
- Whitetail 269  
Common 278  
Desert 279

## Scientific Names

- Aeshna* 34  
*caerulea* 67  
*canadensis* 54  
*clepsydra* 65  
*constricta* 60  
*eremita* 56  
*interrupta* 64  
*juncea* 58  
*palmata* 61  
*persephone* 62  
*sitchensis* 66  
*subarctica* 57  
*tuberculifera* 59  
*umbrosa* 68  
*verticalis* 55  
*walkeri* 63
- Anax* 33  
*amazili* 37  
*concolor* 41  
*junius* 38  
*longipes* 40  
*walsinghami* 39
- Aphylla* 81  
*angustifolia* 88  
*protracta* 89  
*williamsoni* 87
- Arigomphus* 82  
*cornutus* 97  
*furcifer* 99  
*lentulus* 100  
*maxwelli* 102  
*pallidus* 103  
*submedianus* 101

- Basiaeschna* 36  
  *janata* 69
- Boyeria* 36  
  *grafiana* 77  
  *vinosa* 76
- Brachymesia* 270  
  *furcata* 315  
  *gravida* 316  
  *herbida* 317
- Brechmorhoga* 273  
  *mendax* 373  
  *pertinax* 374  
  *praecox* 375
- Cannaphila* 270  
  *insularis* 306
- Celithemis* 271  
  *amanda* 325  
  *bertha* 326  
  *elisa* 327  
  *eponina* 328  
  *fasciata* 322  
  *martha* 321  
  *ornata* 324  
  *verna* 320
- Cordulegaster* 191  
  *bilineata* 195  
  *diadema* 200  
  *diastatops* 194  
  *dorsalis* 201  
  *erronea* 196  
  *maculata* 193  
  *obliqua* 192  
  *sarracenia* 199  
  *sayi* 197  
  *talaria* 198
- Cordulia* 215  
  *shurtleffii* 217
- Coryphaeschna* 33  
  *adnexa* 44  
  *apeora* 45  
  *ingens* 42  
  *viriditas* 43
- Crocothemis* 270  
  *servilia* 305
- Didymops* 202  
  *floridensis* 205  
  *transversa* 204
- Dorocordulia* 215  
  *lepida* 219  
  *libera* 218
- Dismegomphus* 82  
  *armatus* 94  
  *spinosus* 96  
  *spoliatus* 95
- Dythemis* 273  
  *fugax* 368  
  *maya* 369  
  *nigrescens* 366  
  *velox* 367
- Epiaeschna* 34  
  *heros* 52
- Epitheca* 216  
  *canis* 253  
  *costalis* 254  
  *cynosura* 250  
  *petechialis* 255  
  *princeps* 248  
  *semiaquea* 251  
  *sepia* 257  
  *spinigera* 252  
  *spinosa* 258  
  *stella* 256
- Erpetogomphus* 86  
  *compositus* 173  
  *crotalinus* 175  
  *designatus* 171  
  *elaps* 176  
  *eutainia* 177  
  *heterodon* 174  
  *intricatus* 179  
  *lampropeltis* 172  
  *molossus* 178
- Erythemis* 270  
  *attala* 310  
  *collocata* 309  
  *mithroides* 312  
  *peruviana* 313  
  *plebeja* 311  
  *simplicicollis* 308  
  *vesiculosa* 307
- Erythrodiplax* 271  
  *basifusca* 339  
  *berenice* 340  
  *fervida* 343  
  *funerea* 337  
  *fusca* 342  
  *minuscula* 338  
  *umbrata* 336
- Gomphaeschna* 36  
  *antiloque* 79  
  *furcillata* 78

- Gomphurus* 84 means without prior written permission of the publisher  
*pubescens* 301  
*crassus* 135  
*dilatatus* 141  
*externus* 132  
*fraternus* 134  
*gonzalezi* 133  
*hybridus* 136  
*ineatifrons* 142  
*lynnae* 139  
*modestus* 143  
*ozarkensis* 138  
*septima* 137  
*vastus* 140  
*ventricosus* 144
- Gynacantha* 34  
*mexicana* 51  
*nervosa* 50
- Hagenius* 84  
*brevistylus* 145
- Helocordulia* 215  
*selysii* 247  
*uhleri* 246
- Hylogomphus* 82  
*abbreviatus* 104  
*adelphus* 108  
*apomyius* 105  
*geminatus* 106  
*parvidens* 107  
*viridifrons* 109
- Idiataphe* 270  
*cubensis* 318
- Ladona* 269  
*deplanata* 280  
*exusta* 282  
*julia* 281
- Lanthus* 83  
*parvulus* 112  
*vernalis* 113
- Leucorrhinia* 271  
*borealis* 335  
*frigida* 332  
*glacialis* 330  
*hudsonica* 334  
*intacta* 333  
*patricia* 329  
*proxima* 331
- Libellula* 269  
*auripennis* 296  
*axilena* 293  
*comanche* 289  
*composita* 287  
*cyanea* 288  
*flavida* 290  
*forensis* 285  
*gaigei* 299  
*incesta* 292  
*jesseana* 294  
*luctuosa* 283  
*needhami* 297  
*nodisticta* 286  
*pulchella* 284  
*quadrinaculata* 298  
*saturata* 300  
*semifasciata* 295  
*vibrans* 291
- Macrodiplax* 271  
*balteata* 319
- Macromia* 203  
*alleghaniensis* 208  
*annulata* 212  
*illinoiensis* 206  
*illinoiensis georgina* 207  
*magnifica* 213  
*margarita* 209  
*pacifica* 210  
*taeniolata* 211  
*wabashensis* 203
- Macrothemis* 274  
*imitans* 378  
*inacuta* 376  
*inequiunguis* 377  
*pseudimitans* 379
- Miathyria* 274  
*marcella* 385
- Micrathyria* 273  
*aequalis* 364  
*didyma* 365  
*dissocians* 363  
*hagenii* 362
- Nannothemis* 272  
*bella* 360
- Nasiaeschna* 34  
*pentacantha* 53
- Neurocordulia* 216  
*alabamensis* 264  
*michaeli* 259  
*molesta* 262  
*obsoleta* 261  
*virginiensis* 265  
*xanthosoma* 263  
*yamaskanensis* 260

- © Copyright, Princeton University Press. No part of this book may be distributed, posted, or reproduced in any form by digital or mechanical means without prior written permission of the publisher.
- Octogomphus* 63  
*specularis* 114
- Ophiogomphus* 86  
*acuminatus* 163  
*anomalus* 157  
*arizonicus* 167  
*asperus* 154  
*australis* 161  
*bison* 170  
*carolus* 153  
*colubrinus* 156  
*edmundo* 158  
*howei* 164  
*incurvatus* 160  
*mainensis* 152  
*morrisoni* 169  
*occidentis* 168  
*rupinsulensis* 162  
*severus* 166  
*smithi* 155  
*susbehcha* 159  
*westfalli* 165
- Oplonaeschna* 35  
*armata* 75
- Orthemis* 270  
*discolor* 303  
*ferruginea* 302  
*species* 304
- Pachydiplax* 272  
*longipennis* 361
- Paltothemis* 273  
*lineatipes* 370
- Pantala* 274  
*flavescens* 380  
*hymenaea* 381
- Perithemis* 269  
*domitia* 277  
*intensa* 275  
*tenera* 276
- Phanogomphus* 84  
*australis* 126  
*borealis* 116  
*cavillaris* 123  
*descriptus* 117  
*diminutus* 127  
*exilis* 118  
*graslinellus* 129  
*hodgesi* 125  
*kurilis* 131  
*lividus* 120  
*militaris* 130
- oklahomensis* 119  
*quadricolor* 115  
*sandrius* 128  
*spicatus* 121  
*westfalli* 124
- Phyllocycla* 81  
*breviphylla* 90
- Phyllogomphoides* 81  
*albrighti* 93  
*nayaritensis* 91  
*stigmatus* 92
- Planiplax* 270  
*sanguiniventris* 314
- Plathemis* 269  
*lydia* 278  
*subornata* 279
- Progomphus* 85  
*alachuensis* 151  
*bellei* 150  
*borealis* 148  
*obscurus* 149
- Pseudoleon* 273  
*superbus* 371
- Remartinia* 33  
*luteipennis* 46  
*secreta* 45
- Rhionaeschna* 35  
*californica* 73  
*dugesi* 72  
*multicolor* 70  
*mutata* 71  
*psilus* 74
- Somatochlora* 215  
*albicincta* 240  
*brevicincta* 238  
*calverti* 231  
*cingulata* 239  
*elongata* 223  
*ensigera* 237  
*filosa* 232  
*forcipata* 226  
*franklini* 225  
*georgiana* 245  
*hineana* 236  
*hudsonica* 241  
*incurvata* 227  
*kennedyi* 228  
*linearis* 224  
*margarita* 234  
*minor* 220

- provocans* 233  
*sahlbergi* 244  
*semicircularis* 229  
*septentrionalis* 242  
*tenebrosa* 230  
*walshii* 221  
*whitehousei* 243  
*williamsoni* 222
- Stenogomphurus* 85  
  *consanguis* 147  
  *rogersi* 146
- Stylogomphus* 83  
  *albistylus* 110  
  *sigmastylus* 111
- Stylurus* 86  
  *amnicola* 183  
  *ivae* 189  
  *laurae* 188  
  *notatus* 185  
  *olivaceus* 180  
  *plagiatus* 186  
  *potulentus* 190  
  *scudderi* 181  
  *spiniceps* 182  
  *townesi* 184
- Sympetrum* 271  
  *ambiguum* 345  
  *corruptum* 356  
  *costiferum* 352  
  *danae* 344  
  *illotum* 357  
  *internum* 348  
  *madidum* 354  
  *obtrusum* 346  
  *pallipes* 355  
  *rubicundulum* 347  
  *semicinctum* 350  
  *signiferum* 359  
  *vicinum* 358
- Tachopteryx* 29  
  *thoreyi* 30
- Tanypteryx* 29  
  *hageni* 31
- Tauriphila* 274  
  *argo* 382  
  *australis* 383  
  *azteca* 384
- Tholymis* 273  
  *citrina* 372
- abdominalis* 391  
*binotata* 387  
*carolina* 388  
*darwini* 392  
*insularis* 390  
*lacerata* 386  
*onusta* 389
- Triacanthagyna* 33  
  *caribbea* 49  
  *septima* 47  
  *trifida* 48
- Williamsonia* 216  
  *fletcheri* 266  
  *lintneri* 267