







CONTENTS

	■ Preface	xi
1	OVERVIEW	1
1.1	■ Workshop	10
2	GREENHOUSE	11
2.1	The greenhouse effect	13
	2.1.1 Earth's energy balance	13
	2.1.2 The greenhouse effect: a two-layer model	14
	2.1.3 The emission height and lapse rate	17
2.2	Greenhouse gases	19
	2.2.1 Wavelength-dependent black-body radiation	19
	2.2.2 Energy levels and absorption	20
	2.2.3 Broadening	21
	2.2.4 Radiative forcing, logarithmic dependence on CO ₂	22
	2.2.5 Other greenhouse gases, global warming potential	24
	■ Box 2.1: The Clausius-Clapeyron relation	25
	2.2.6 The water vapor feedback	26
2.3	■ Workshop	28

3	TEMPERATURE	31
3.1	Climate sensitivity and the role of the ocean	34
	3.1.1 Equilibrium climate sensitivity	34
	3.1.2 Transient climate sensitivity	36
3.2	Polar amplification	39
3.3	“Hiatus” periods	44
3.4	Stratospheric cooling	45
	3.4.1 Detection and attribution	48
3.5	■ Workshop	49
4	SEA LEVEL	53
4.1	Global mean sea level changes	56
	4.1.1 Thermal expansion	56
	■ Box 4.1: Past warm climates	59
	4.1.2 Ice sheets and mountain glaciers	61
	4.1.3 Land water storage	62
	4.1.4 Detection of anthropogenic climate change in GMSL	62
4.2	Regional sea level changes	64
	4.2.1 Atmosphere-ocean interaction	64
	4.2.2 Land changes	70
	4.2.3 Gravitational effects: sea level fingerprints of melting	71
4.3	■ Workshop	73
5	OCEAN ACIDIFICATION	77
5.1	Calcium carbonate (CaCO ₃) dissolution	80
	■ Box 5.1: The carbon cycle	81
5.2	The carbonate system	82
	5.2.1 Carbonate system equations	85
	5.2.2 Approximate solution of the carbonate system	87
5.3	Response to perturbations	90
	5.3.1 Response to increased atmospheric CO ₂ concentration	90

5.3.2	Response to warming	91
5.3.3	Long-term decline of anthropogenic CO ₂	92
5.4	 Workshop	95
6	OCEAN CIRCULATION	99
	 Box 6.1: Ocean temperature, salinity, and water masses	102
6.1	Observations and projections	103
6.2	The Stommel model	106
6.3	Multiple equilibria, tipping points, hysteresis	110
6.4	Keeping it simple	113
6.5	Consequences of AMOC collapse	115
6.6	The oceans and global warming	116
6.7	 Workshop	119
7	CLOUDS	121
7.1	Cloud fundamentals	123
7.2	Moist convection and cloud formation	125
7.3	Cloud microphysics	131
7.4	Cloud feedbacks and climate uncertainty	134
7.5	 Workshop	138
8	HURRICANES	141
8.1	Factors affecting hurricane magnitude	142
8.2	Potential intensity	145
	 Box 8.1: El Niño, La Niña	146
8.3	Observed changes to hurricane activity	152
8.4	 Workshop	155
9	ARCTIC SEA ICE	157
9.1	Processes and feedbacks	161
9.2	Detection of climate change	165

9.3	Future projections	167
9.4	■ Workshop	169
10	GREENLAND AND ANTARCTICA	171
10.1	Terminology	173
10.2	Processes	174
	10.2.1 Accumulation	174
	10.2.2 Surface melting and PDD	175
	10.2.3 Calving	177
	10.2.4 Ice flow	179
	10.2.5 Basal hydrology	181
	■ Box 10.1: Ice ages	185
10.3	Observed trends and projections	186
10.4	■ Workshop	190
11	MOUNTAIN GLACIERS	193
11.1	Observed retreat	196
11.2	Mountain glaciers as a climate indicator	198
	11.2.1 Reconstructing temperature from glacier extent	198
	11.2.2 Ice cores from mountain glaciers	202
11.3	Glacier dynamics	203
11.4	Mountain glacier retreat in perspective	206
11.5	■ Workshop	208
12	DROUGHTS AND PRECIPITATION	211
12.1	Relevant processes and terms	214
12.2	Why droughts happen, climate teleconnections	214
	■ Box 12.1: The Indian Ocean dipole	217
12.3	Detection of climate change	219
12.4	Observations, paleo proxy data	221
12.5	Example projections: Southwest United States and the Sahel	222

12.6	Understanding precipitation trends	224
	12.6.1 Hadley cell expansion and weakening	225
	12.6.2 “Wet getting wetter, dry getting drier” projections	228
	12.6.3 Precipitation extremes in a warmer climate	231
12.7	A bucket model for soil moisture	237
12.8	 Workshop	242
13	HEAT WAVES	245
13.1	Physical processes	247
13.2	Heat stress	251
13.3	Future projections	253
13.4	 Workshop	258
14	FOREST FIRES	261
14.1	Tools	264
14.2	Detection of burnt area due to ACC	265
14.3	Fires and natural climate variability	269
14.4	Observed global trends and future projections	273
14.5	 Workshop	276
	 Notes	279
	 Bibliography	293
	 Index	305

1

OVERVIEW

Consider a brief overview of the issues to be surveyed in the following chapters. This overview outlines observed and expected changes, our ability to attribute observed trends and events to anthropogenic climate change, the level and reasons for the uncertainties involved in quantifying both observed and projected changes, and the very diverse timescales of the major processes involved.

The first three chapters address the basics: What are greenhouse gases and how do they lead to warming? How and why does the atmospheric warming vary in time and space (both as a function of latitude and height)? And finally, sea level rise. Beginning with greenhouse gases, the blue line in Figure 1.1a shows the iconic Mauna Loa CO₂ record collected since 1958, preceded by an ice-core-based reconstruction. CO₂ concentration has been at 280 ppm for over 10,000 yr, since the last ice age, and has therefore increased by about 50% so far, at an unprecedented speed. There is, of course, no doubt that CO₂ is increasing and that the increase is attributable to the anthropogenic burning of fossil

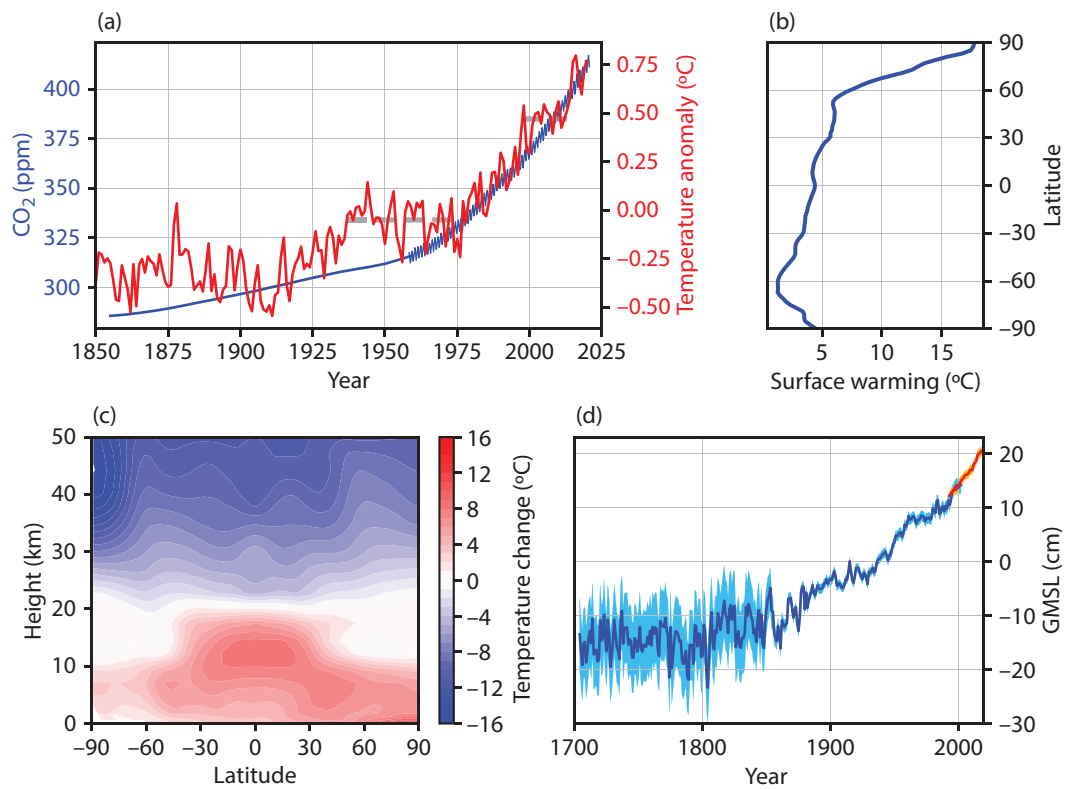


Figure 1.1: Greenhouse effect, warming, and sea level rise.

(a) Atmospheric CO₂ concentration (blue) and global mean surface temperature anomaly (in red, defined as the deviation from the mean over 1961–1990) since 1850. Also shown by gray dashed lines are two “hiatus” periods of *seemingly* reduced rates of warming. (b) The projected surface warming over the 21st century in an RCP8.5 scenario in a climate model, as a function of latitude, showing a very pronounced polar (mostly Arctic) amplification. (c) Projected atmospheric temperature changes over the 21st century as a function of altitude and latitude, showing a tropospheric warming and stratospheric cooling in the RCP8.5 scenario. (d) Estimated global-mean sea level anomaly since 1700 (blue line) and the estimated uncertainty (light-blue shading). In red and orange: the satellite record since 1993.

fuel. Once in the atmosphere, we will see that it will take thousands of years for the CO₂ to naturally decline after anthropogenic emissions are eliminated. Chapter 2 addresses the question of how greenhouse gases trap heat and lead to warming, both on a molecular level and by examining the Earth global energy balance. These are ideas that have been well understood for a while now. The warming due to greenhouse gas increase is explored in chapter 3. The red line in Figure 1.1a shows that the globally averaged surface temperature anomaly

(defined as the deviation from a reference value, in this case the mean over 1961–1990) has warmed so far by over 1 °C. Future climate projections rely on estimates of future greenhouse gas concentrations, referred to as Representative Concentration Pathways (RCPs) and followed by a number indicating the expected enhancement in radiative heating. We discuss these scenarios in section 2.1 and note briefly now that RCP8.5 is what one might think of as a business-as-usual scenario in which CO₂ concentration increases to a very high value of over 1000 ppm by year 2100. While one hopes that such a high future greenhouse gas concentration is not a realistic scenario, it allows us to clearly understand climate change trends and mechanisms that may be more difficult to identify in less severe scenarios. Figure 1.1b shows that the projected surface warming under RCP8.5 is strongly amplified toward the poles (especially the Arctic), while Figure 1.1c shows that the stratosphere is projected under the same scenario to cool significantly above an altitude of about 20 km, while the troposphere warms. Polar amplification and stratospheric cooling are already observed today, and we will examine several mechanisms that are responsible for these signals. We will also see that even at the present level of CO₂, additional warming would have occurred if not for the cool, deep ocean, which takes hundreds of years to warm in response to the enhanced greenhouse forcing. While CO₂ has increased monotonically, the warming of the global mean surface temperature seems to have paused during 1940–1970 or so and during 1998–2013, as shown by the horizontal dashed lines in Figure 1.1a. We will show that such seeming “hiatus” periods in the increase in global mean surface temperature are an expected consequence of anthropogenic warming in the presence of natural climate variability.

One of the most consequential results of ocean warming and of the expected melting of land-based ice is sea level rise, as analyzed in chapter 4 and shown in Figure 1.1d. Global mean sea level has increased by some 30 cm over the past 150 yr, is currently increasing at about 3.5 mm/yr, and is projected to rise by up to a meter by 2100. Many processes are responsible for sea level rise, from the expansion of warming ocean water to land-based ice melting. Furthermore, sea level rise is expected to vary from region to region, and we will discuss the many mechanisms involved, from wind and atmospheric pressure changes, to the gravitational effect of melting ice over Greenland and Antarctica, and more. The timescales of the processes involved vary from a near-instantaneous

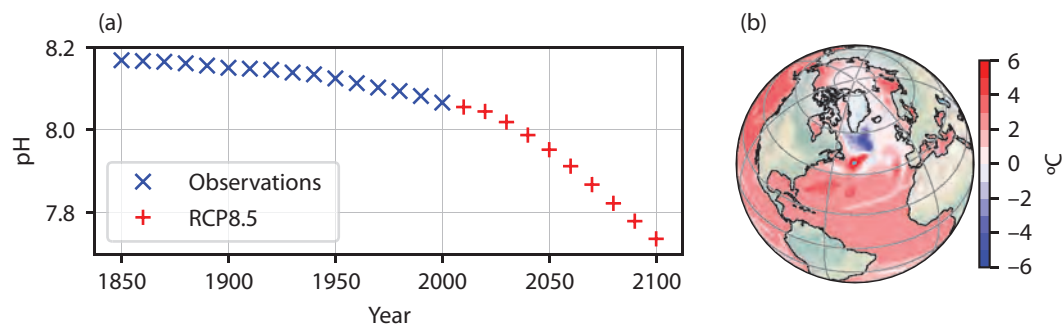


Figure 1.2: Ocean acidification and circulation.

(a) Observed mean surface ocean pH from 1850 to 2000 (blue), followed by projected pH to 2100 in the RCP8.5 scenario (red). (b) Projected sea surface temperature change over the 21st century in the RCP8.5 scenario, showing an overall warming, yet with a local cooling in the northern North Atlantic due to the projected collapse of the ocean overturning circulation.

response (e.g., to changes in atmospheric pressure or ocean currents) to hundreds of years (warming of the deep ocean, melting in Greenland), to many thousands (significant melting of East Antarctica), with uncertainty levels typically higher for processes with longer timescales.

Two more ocean-centered issues are next examined, beginning with ocean acidification in chapter 5 and then the possible collapse of the meridional overturning ocean circulation in chapter 6. Ocean acidification is referred to as “the other global warming problem.” The absorption by the ocean of about a quarter of the anthropogenically emitted CO_2 (with another quarter absorbed by the land biosphere) has significantly reduced the warming experienced so far. Yet Figure 1.2a shows that as a result, ocean pH, the measure of seawater acidity, already decreased from 8.16 to 8.06, which implies a significant increase of 25%(!) in the concentration of H^+ ions in the ocean. We will examine the basic carbonate chemistry behind ocean acidification, how it may affect the deposition of calcium carbonate structures by oceanic organisms, and how atmospheric CO_2 can eventually decline once emissions are significantly reduced, on a timescale of thousands of years. While there is little uncertainty involved in assessing expected ocean pH for a given atmospheric CO_2 level, the response of ocean biology is complex and is still being studied.

Chapter 6 discusses how the oceanic meridional circulation, which carries heat poleward and contributes to the warmth of the high-latitude North Atlantic,

may collapse in a global warming scenario over the next century or so. The circulation collapse is expected to contribute to a regionally reduced warming and even cooling in the northern North Atlantic, as shown in the model projection of Figure 1.2b, as well as to other disruptions to the current state of the ocean. We will analyze how a gradual CO₂ increase may lead to an abrupt ocean circulation response, explaining in the process the concept of climate *tipping points*.

Returning to the atmosphere in the next two chapters, we address two issues surrounded by a larger degree of uncertainty: clouds and hurricanes. In chapter 7 we study clouds, believed to be the main source of uncertainty in global warming projections and one of the main reasons that the uncertainty in global warming projections has not decreased over the past four decades. Unlike the discussion of climate change issues in other chapters, the focus of this chapter is not explaining an observed or projected change but rather making it clear why clouds are a source of such large uncertainty in our climate projections. Clouds have a most significant effect on climate due to both their reflectivity of sunlight, which has a cooling effect, and their trapping of heat emitted by the Earth surface, contributing to the greenhouse warming effect. Figures 1.3a,b show the projected change in clouds over the 21st century in the RCP8.5 scenario in two different climate models. The two models clearly calculate a very different cloud response, demonstrating the model disagreement and therefore the uncertainty in future projections of clouds. This disagreement in the simulation of cloud cover also leads to a very different warming projected by these two models, and we will explain why the representation of clouds in climate models involves such a large uncertainty. The subject of clouds allows us to also explore that of atmospheric convection, which comes up repeatedly in the discussion of many global warming–related issues. Following that, the response of hurricanes to global warming, both observed and projected for a future climate, is analyzed in chapter 8. Figure 1.3c shows the estimated number of Atlantic hurricanes over the past 140 yr. It is difficult to identify a trend in these data, and it turns out that there is currently no reliable and well-understood mechanism that can be used to project future changes to the *number* of storms. We discuss the formation mechanism of hurricanes, how it depends on the upper ocean temperature, and why the *magnitude* of hurricanes may be expected to increase in a warmer climate. We also analyze the observed record and examine the many uncertainty factors involved in the projection of future hurricane magnitudes.

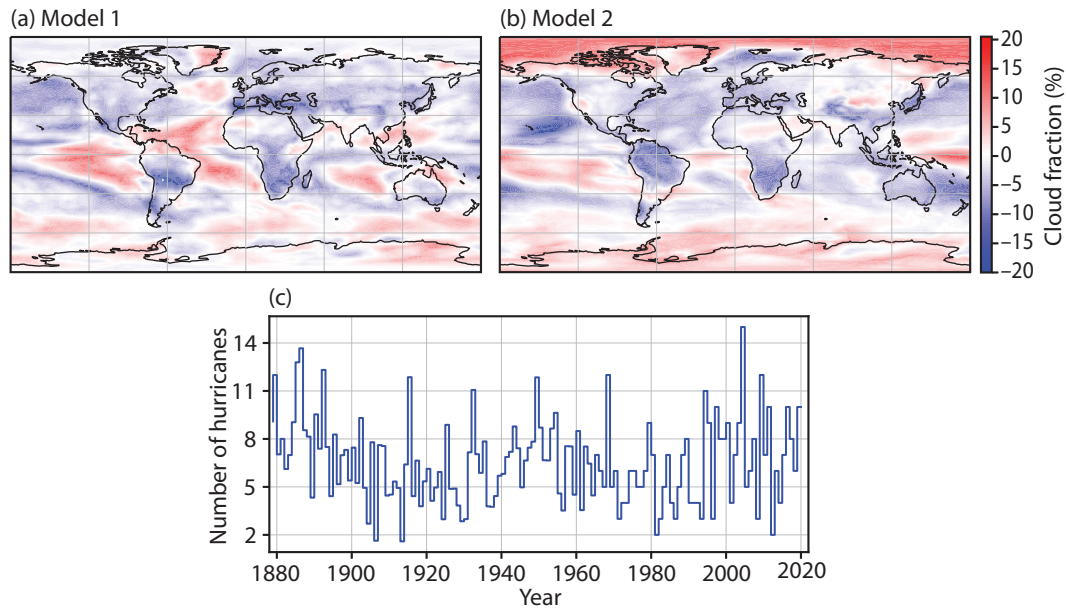


Figure 1.3: Clouds and hurricanes.

(a,b) Projected change in cloud cover due to greenhouse forcing, from a preindustrial state to 2100 in the RCP8.5 scenario, for two different climate models, demonstrating the large uncertainty in simulating clouds in climate models. (c) Estimated number of hurricanes over the North Atlantic as a function of year.

The following three chapters deal with the cryosphere: Arctic sea ice, ice sheets over Greenland and Antarctica, and mountain glaciers. Chapter 9 explains the processes and powerful feedbacks behind the dramatic and well-observed decline of summer Arctic sea ice over the past few decades (but not of sea ice near Antarctica, interestingly). This decline is seen in Figure 1.4a, and the same processes and feedbacks may lead to an even more dramatic decline over the next few decades. We also discuss ways of differentiating between a sea ice melt trend due to anthropogenic climate change and trends due to natural variability. Possible mechanisms and feedbacks that may lead to a significant reduction of the ice mass of the large ice sheets of Greenland and Antarctica are presented in chapter 10. Such a reduction can cause a further rise of sea level by many meters over a timescale of hundreds to thousands of years and involves a large degree of uncertainty. There is the (quite uncertain) potential for rapid changes as well, and we explain the mechanisms that may lead to such a tipping point behavior. This is followed by an analysis in chapter 11 of one of the more iconic

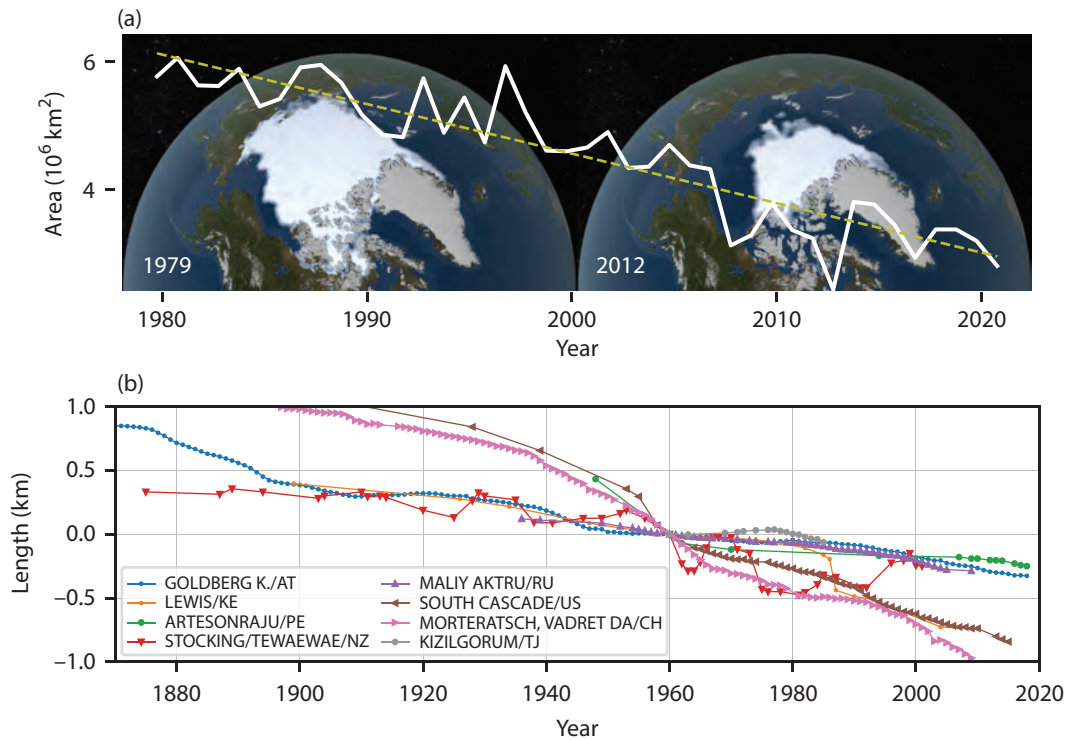


Figure 1.4: The cryosphere.

(a) The yearly minimum (September) Arctic sea ice area as a function of year over the satellite era, superimposed on NASA images of sea ice cover the first year of satellite data, 1979, and a year of a particularly small sea ice area, 2012. (b) Records of glacier length for a few mountain glaciers, relative to their length in 1960.

consequences of the already observed global warming: the retreat of mountain glaciers, as seen in Figure 1.4b. These changes are already occurring, and we will see that the retreat over the past three or so decades can be clearly attributed to anthropogenic global warming. We explain the processes behind this decline and the relevant dynamics of mountain glaciers that underlie their observed and projected decline.

We conclude with three chapters on possible consequences of climate warming, involving changes to droughts and precipitation, heat waves and forest fires. We review in chapter 12 the types and causes of prolonged droughts, as demonstrated in Figures 1.5a,b, showing how La Niña events in the equatorial east Pacific can lead to California droughts in a climate model. This is then used to consider why droughts might change in the future and why such a prediction

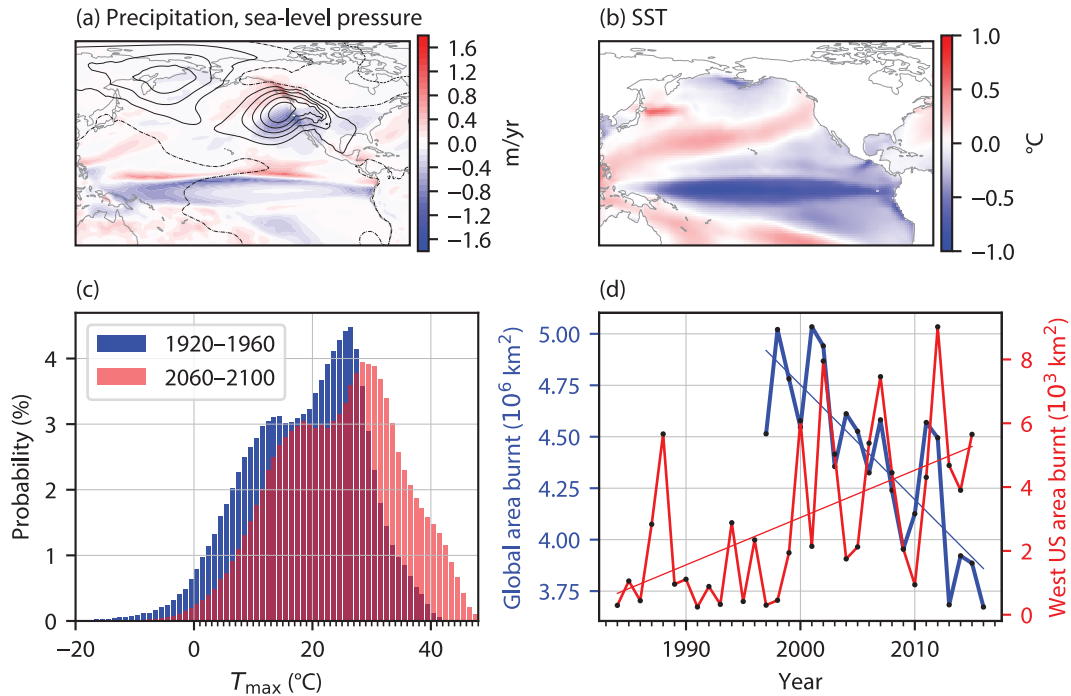


Figure 1.5: Droughts, heat waves, and forest fires.

(a,b) An analysis of droughts in a climate model. Colors in (a) show the precipitation anomaly during January drought years over California, with the blue area over California and off-coast there indicating lower precipitation than normal. The black contour lines show a high sea level atmospheric pressure anomaly that typically occurs above drought conditions (contour interval is 1 hPa; zero contour is dash-dot). (b) Sea surface temperature anomaly during these California drought years, showing a La Niña-like cold sea surface temperature (see box 8.1) over the equatorial Pacific and demonstrating how sea surface temperature anomalies drive remote drought conditions. (c) Heat waves in a warming climate. The probability of occurrence of maximum daily temperatures over the great plains in the United States at the beginning of the 20th century (blue) vs at the end of the 21st century in the RCP8.5 scenario (red). The shift to larger daily maximum temperatures is an example of projected changes to the characteristics of heat waves. (d) Forest fires. The red curve shows the increasing burnt area over the western United States over the past decades, and the blue curve shows a decrease in the global burnt area since the 1990s.

is still uncertain. We will see how the severity of past droughts can be reconstructed, helping to put current drought events into perspective, and we will model the processes that control soil moisture during droughts. We then analyze two test cases, the Sahel and Southwest United States, and explicitly demonstrate the uncertainty in future projections of droughts. Finally, we consider projections for precipitation changes from three perspectives. First, we discuss

the projection that the Hadley meridional atmospheric circulation—of air rising near the equator and sinking at about 30° north and south—might expand poleward. The expansion has possible consequences to the location of desert bands that tend to be located under the subsiding part of the Hadley circulation. Second, we attempt to understand the projection that precipitation changes will follow a pattern of *wet getting wetter and dry getting drier* over large areas of the globe, as well as the limitations of this overall projected pattern, which does not seem robust over land areas. And finally, we examine projections for precipitation extremes and explain why there is a robust expectation for more precipitation to occur in heavy precipitation events in a warmer climate.

Heat waves are studied in chapter 13. These are weather events, and are therefore much shorter than droughts but share some of their physical mechanisms and characteristics. Figure 1.5c shows how the probability of occurrence of a high maximum daily temperature dramatically increases in model projections from the early 20th century (blue bars) to late in the 21st century (red). We demonstrate how the statistics of heat waves may change and what this can teach us about their dynamics in a warmer climate. We conclude with the subject of forest fires (chapter 14). Observations suggest a recent increase in fires over the western United States, for example, as seen in Figure 1.5d (red line), although global fire area has decreased over the past couple of decades (blue). We address factors affecting forest fires and different ways in which humans can affect fires via both climate- and non-climate-related influences. While we do understand qualitatively how fires depend on these many different factors, the issues involved are sufficiently complex that the only way to attempt to differentiate the effect of anthropogenic climate change from other anthropogenic effects and from natural climate variability is statistical analysis, resulting in very significant uncertainty. We discuss, as specific examples, fires in the western United States and Australia, as well as on a global scale, and attempt to identify many of the uncertainties involved.

As we move into the detailed analysis of these issues that arise in global warming science, we keep in mind the following questions: *What* has been observed or what is projected? *Why* do these changes occur, or why are they expected? What is the *timescale* in which these changes operate? What are the *uncertainty levels*, and *sources of uncertainty*?

1.1 WORKSHOP

A Jupyter notebook with the workshop and corresponding data file are available; see <https://press.princeton.edu/global-warming-science>.

Go over and solve the first python notebook with an introduction to programming and a very brief review of some basic math concepts that are used later in the course.



INDEX

Symbols

$\delta^{18}\text{O}$

ice ages	185
mountain glaciers	202
past warm climates	59

A

ablation	173
zone, ice sheets	174
zone, mountain glaciers	194
absorption	
lines	20
longwave, by CO_2	21
longwave, by H_2O	21
SW, melt ponds	176
SW, sea ice	161
absorptivity	14
ACC, <i>see</i> Anthropogenic Climate Change	
accumulation	173
zone, ice sheets	174
zone, mountain glaciers	194
adiabatic process	125
AMOC	283

clouds	125
drying, deserts	225
extreme precipitation	234
hurricane efficiency	150
lapse rate feedback	41
MSE conservation	126
subsidence, droughts	216
warming, heat waves	248
wet bulb temperature	252
aerosols	131
direct effects	133
indirect effects	133
African easterly waves	142
albedo	13
clouds	123
feedback	39
ice	176
land	13
melt ponds	176
polar amplification	39
snow	176
alkalinity	83
carbonate	85
AMO, <i>see</i> Atlantic multidecadal oscillation	

AMOC, <i>see</i> Atlantic meridional overturning circulation		boundary layer	
Andes glaciers	195	droughts	216
anomaly		Hadley cell expansion	227
fire season length	273	hurricanes	144
glacier length	199	BP, <i>see</i> before present	
sea level	54	bucket model for soil moisture	237
soil moisture	224	equations	238
surface temperature	2, 31, 200, 213, 216	buffer effect	91
Antarctic Bottom Water	102	bulk coefficient	
Antarctic Intermediate Water	102	evaporation	149, 238
Anthropogenic Climate Change		friction	146
detection vs attribution	48	C	
Archimedes' law	71	calcium carbonate	78
Arctic amplification, <i>see</i> polar amplification		dissolution at high CO ₂	90
Atlantic meridional overturning		solubility product	80
circulation	100	calving	173, 177
abrupt climate change	160	buoyancy force	178
box model	106	cliff instability	177
collapse consequences	115	hydrofracturing	178
hysteresis	113	rift propagation	177
multiple equilibria	113	slumping	178
sea ice	160	carbon cycle	81
Stommel model	106	carbon dating	197
streamfunction	105	carbonate ion	78
tipping point	112	carbonate system	81
Atlantic multidecadal		approximate solution	87
oscillation	104	buffer effect	91
droughts	217	equations	85
attribution of ACC, <i>see</i> detection and attribution		solution	86
		carbonic acid	78
		Carnot cycle	149
		CCN, <i>see</i> cloud condensation nuclei	
		CDE, <i>see</i> cumulative distribution function	
B		CFC	24
basal		Clausius-Clapeyron	26
friction	179	Arctic lapse rate feedback	43
lubrication	181	atmospheric convection	125
melting	182	droughts	215
temperature	183	Hadley cell expansion	227
bicarbonate ion	78	hurricanes	144, 148
black body	13	MSE conservation	127
radiation	20	precipitation extremes	234
blocking		sea level	61
heat waves	250	surface mass balance	174
Boltzmann constant	20		

tropical lapse rate feedback	42	ocean solubility and warming	91
VPD, fires	264	solubility pump	91
wet getting wetter	230	vs other greenhouse gases	24
cliff instability	177	CO ₂ -equivalent mixing ratio	24, 32
climate sensitivity		coastal flooding	67
equilibrium	36	composite analysis	
of glaciers	199	droughts	218
transient	39	El Niño, hurricanes	145
climatic water deficit	264	heat waves	248
climatology		condensation	
droughts	218	clouds	126
heat waves	250	hurricanes	142
SST, hurricanes	145	precipitation extremes	234
cloud condensation nuclei	133	tropical lapse rate feedback	42
cloud radiative effect	134	convection	126
climate uncertainty	134	heat waves	249
clouds		hurricanes	144
cirrus	124	lapse rate	19
climate uncertainty	137	ocean, AMOC	100
dissipation	133	winter sea ice melting	168
droplet size distribution	132	Coriolis force	
feedbacks	134	AMOC	106
feedbacks, energy balance	135	droughts	215
height	124	heat waves	248
high vs low	124	hurricanes	142
LW emissivity	123	sea level	67
microphysics	131	CRE, <i>see</i> Cloud radiative effect	
mixed phase	123	crevasses	177
model disagreement	134	cumulative distribution function	
mountain glaciers	196	extreme precipitation	233
parameterization	122	heat waves	257
radiative effect	123	CWD, <i>see</i> climatic water deficit	
stratiform	131		
stratocumulus	124		
subgrid scale	131		
SW albedo	123	D	
water vs ice	124	daily maximum temperature	247
cluster analysis	271	Dansgaard-Oeschger events	160
CO ₂		desert belt	225
absorption bands	20	detection and attribution	48
doubling	23, 32, 35, 38, 57, 134	Antarctic sea ice	164
doubling, cloud feedbacks	136	droughts	219
fertilization	275	error types I and II	154
land sink	78	forest fires	272
ocean absorption	91	Greenland and Antarctica	187
ocean sink	78	heat waves	257
		hurricanes	152
		mountain glaciers	207

detection and attribution (<i>continued</i>)		energy balance	13
ocean acidification	94	atmosphere	14
ocean circulation, AMOC	104	cloud feedbacks	134
precipitation extremes	237	ice surface	183
sea ice	165	one-layer model	14
sea level, global	63	stratospheric cooling	46
sea level, regional	67	surface	14
stratospheric cooling	48	two-layer model	15
detection of ACC, <i>see</i> detection and attribution		ensemble model runs	253, 254, 267
DIC, <i>see</i> dissolved inorganic carbon		ENSO, <i>see</i> El Niño–Southern Oscillation	
dimensional analysis	184	Eocene	59
dissolved inorganic carbon	83	equation of state	58
droughts		equilibrium line altitude	204
agricultural	212	ice sheets	174
Australia fires	269	mountain glaciers	195
California, La Niña	218	error types I and II	154
future projections	222	evaporation	
hydrological	212	droughts	224
megadroughts	221	hurricanes	149
megadroughts, La Niña	222	ocean salinity	108
meteorological	212	potential	238
reconstruction	221	soil resistance	238
Sahel	222	evapotranspiration	214
socioeconomic	212	potential	214
Southwest United States	224		
dry static energy	127	F	
droughts	216	fires	
heat waves	249	area burnt	265
Dust Bowl	251	area burnt versus VPD	265
dynamic vegetation models	273	Australia	269
		Australia, projections	273
E		climate factors	262
El Niño	146	deficit	263
droughts	217	fire indices	265
hurricanes	145	global projections	273
Pliocene	61	human factors	263
El Niño–Southern Oscillation	146, 287	lightnings	262
ELA, <i>see</i> equilibrium line altitude		projections uncertainty	275
elevation-desert effect	174	season length	273
Ellesmere Island glaciers	198	western US	265
emission height	18	fossil fuels	82
emissivity	14		
clouds	123	G	
sea ice melting	168	geopotential height	247
stratospheric cooling	46		

geostrophy		CDF	257
hurricanes	143	decadal statistics	253
sea level	69	PDF	254
geothermal heat flux	182	projected statistics	255
gigaton carbon	81	projections	253
Glen's law	179	subsidence	248
global mean sea level		surface winds	250
Greenland, Antarctica	61, 172	vs droughts	251
global mean surface		Henry's law	82
temperature		buffer effect	91
glacier length	201	heterogeneous nucleation	133
observed	31	“hiatus” periods	33, 44
projected, RCP	31	high pressure	
global warming hiatus	33	droughts	214
global warming potential	24	heat waves	247
GMSL, <i>see</i> global mean sea		hockey-stick curve	32
level		Holocene	185
GRACE satellites	186	homogeneous nucleation	133
gradient balance	143	humidity, <i>see</i> specific humidity	
graupel	131	hurricanes	
Great Plains	247	convection	144
greenhouse gases		development	142
absorption bands	20	energetics	145
Doppler broadening	22	energy input	148
global warming potential	24	eye wall	142
lifetime	24	observed increase	152
pressure broadening	21	power dissipation	146
water vapor feedback	27	shear, ventilation	144
greening	275	warm upper ocean	148
grounding line	173, 179	hydrofracturing	178
MISI	180	hydrometeors	131
groundwater table	238	hydrostatic balance	
GtC, <i>see</i> gigaton carbon		atmospheric pressure	
Gulf Stream	67, 100	profile	129
GWP, <i>see</i> global warming		MSE conservation	284
potential		sea level	66
H		I	
Hadley cell	225	ice	
desert belts	225	heat conductivity	183
halocline	165	heat diffusivity	184
heat capacity	34, 37	ice cores	
atmosphere	34	dust layers	202
land	35	isotopic composition	202
ocean	34	melt signal	203
heat stress	251	seasonal cycle	203
heat waves		ice shelf	173

ice streams	173	moist adiabatic	127
acceleration	181	mountain glaciers	195
back-pressure	179	latent heat	
retrograde slope	181	flux, droughts	248
IN, <i>see</i> ice nuclei		heat waves	250
Indian Ocean dipole	217	hurricanes	148
Australia fires	269	lapse rate	42
droughts	217	of condensation, evaporation	126
instability		of melting, ice sheets	183
AMOC	110	release	126
MISI	181	sea ice	163
Intergovernmental Panel on		lateral friction	179
Climate Change	12, 281	LCL, <i>see</i> lift condensation level	
inversion	43, 252	leaf area index	290
IOD, <i>see</i> Indian Ocean dipole		level of free convection	129
IPCC, <i>see</i> Intergovernmental		level of neutral buoyancy	129
Panel on Climate Change		LFC, <i>see</i> level of free	
isostatic adjustment	71	convection	
isotherms		LHS, <i>see</i> left-hand side	
droughts	216	lift condensation level	129
isotopic composition		precipitation extremes	234
ice cores	202	Little Ice Age	
		mountain glaciers	194
K		sea level	54
Kilimanjaro glaciers	195	log-normal distribution	132
kinetic energy		longwave radiation	14
hurricanes	149	Arctic amplification	41, 43
		energy balance	14, 15
		ice energy balance	183
		Planck feedback	40
		trapped by clouds	122
L		LW, <i>see</i> longwave radiation	
La Niña	146		
droughts	218	M	
forest fires	271	main development area	145
hurricanes	145	marginal ice zone	157
land, <i>see</i> soil		marine ice sheet instability	180
albedo	13	marine-based ice sheet	174
biosphere	78	MDR, <i>see</i> main development area	
greening	275	melt ponds	
precipitation	231	ice sheets	176
water storage, sea level	62	sea ice	161
lapse rate		meridional moisture flux	229
dry adiabatic	127	methane	24
feedback, Arctic	43	microphysics	131
feedback, tropical	43	extreme precipitation	235
greenhouse effect	17		
ice sheets	174		

MISI, <i>see</i> marine ice sheet		North Atlantic Deep Water	102
instability		AMOC	100
mixed layer	56, 102	Arctic sea ice	165
hurricanes	144		
MOC, <i>see</i> meridional		O	
overturning circulation		ocean	
moist adiabatic lapse rate	41	acidification	78
moist adiabatic temperature		circulation, AMOC	100
profile	41	cloud feedbacks	135
moist static energy	126	CO ₂ dissolution	29
graphical solution	128	deep, warming	37
lapse rate feedback	43	delaying warming	39
moulins	181	evaporation, hurricanes	142
Mount Kenya glaciers	195	evaporation, SMB	174
mountain glaciers		freezing	161
accelerated recent retreat	206	ice sheet calving	178
adjustment time	199	precipitation	213
adjustment to warming	202	roles in global warming	116
and temperature	198	temperature, salinity	102
carbon dating the retreat	197	upper, warming	37
climate sensitivity	199	warming and sea level	56
clouds	196	water density	57
dynamics of response	205	water masses	102
equilibrium length	199	OLR, <i>see</i> outgoing longwave	
front location	194	radiation	
global trends	197	omega, saturation state	81
lapse rate	195	outgoing longwave radiation	18
length	194	Arctic amplification	41
length records	197	clouds	134
Little Ice Age	197	cooling, droughts	216
retreat exposes plants	197	cooling, heat waves	249
runoff	194	emission height	18
sea level	62, 194	energy balance	14
tropical	195	ice surface temperature	183
MSE, <i>see</i> moist static energy		ozone	
Murray-Darling Basin	271	layer	17, 45–46
		toxic, fires	262
N		P	
negative feedback		Palmer Drought Severity	
Arctic amplification	41	Index	214
sea ice thickness	163	parameterization	
tropical lapse rate	43	calving	178
NINO3.4 index		cloud microphysics	132
Australian droughts, fires	271	clouds	122
hurricanes	147		
nitrous oxide	24		

parameterization (<i>continued</i>)		droughts	224
extreme precipitation	235	dry getting drier	228
moist convection	131	efficiency, extremes	234
ocean mixing	106	enhancing fires	262
past warm climates		extremes	231
Eocene	59	Hadley cell	225
Pliocene	61	heat waves	248
pCO ₂	92	meridional moisture flux	229
PDD, <i>see</i> positive degree days		wet getting wetter	228
PDF, <i>see</i> probability distribution function		probability distribution function	
PDI, <i>see</i> power dissipation index		cloud droplet sizes	132
PET, <i>see</i> potential evapotranspiration		droughts	220
pH	78	heat waves	254
as a function of CO ₂	86	sea ice trends	165
response to CO ₂ increase	90	prograde slope	181
photon energy	20		
Planck constant	20	Q	
Planck feedback	40	Quelccaya ice cap, Peru	198, 202
Planck's Law	20		
Pliocene	61	R	
polar amplification	33, 39	radiation	
albedo	39	longwave	14
lapse rate feedback	43	shortwave	14
Planck feedback	40	visible	14
positive degree days	175, 195	radiative cooling	
positive feedback		climate sensitivity	35
atmospheric convection	126	clouds	131
clouds	136	droughts	216
hurricanes	143	heatwaves	249
ice sheet melt ponds	177	radiative effect	
MISI	181	clouds	123
runaway greenhouse	280	radiative forcing	23, 34
sea ice age, roughness	162	CO ₂ vs other gases	24
sea ice albedo	161	CO ₂ , logarithmic behavior	23
sea ice mobility	163	RAPID	103
water vapor	27	RCP, <i>see</i> Representative Concentration Pathway	
potential evapotranspiration	214	RCP8.5	24
droughts, bucket model	238	realism and motivation	xii
fires	264	regression	
potential intensity	150	fires	265
power dissipation index	146	hurricanes	153
precipitation		sea ice	166
clouds	133	relative humidity	25, 126
deficit and fires	269	convection	130
desert belts	225		

droughts	215	mobility	163
evaporation, droughts	239	observed record	158
evaporation, hurricanes	149	pancake ice	161
fires	264	projections	168
fixed in global warming	27	roughness	161
global precipitation		thickness	160
projections	230	variability PDF	166
heat stress	251	winter melting	168
heat waves	249	sea level	
Representative Concentration		coastal erosion	70
Pathway	12, 24	global mean	55
retrograde slope	180	gravitational fingerprint	72
RH, <i>see</i> relative humidity		high tide	67
RHS, <i>see</i> right-hand side		iostatic adjustment	71
Rossby waves	216	land water storage	62
runaway greenhouse warming	280	mountain glaciers	62, 194
		pressure loading	64
		relative	55
		rise, ocean warming	57
		steric	55
		storm surge	67
		wind stress	65
		sea surface temperature	
		AMOC collapse	115
		forest fires	269
		hurricanes	143
		teleconnections, droughts	216
		seawater	
		carbonate system	78
		density, AMOC	106
		heat capacity	37
		thermal expansion	58
		shallow ice approximation	206
		shear	
		ice flow	179
		wind, hurricanes	144
		shortwave radiation	14
		cloud albedo	122
		enhanced, droughts	215
		enhanced, heat waves	249
		mountain glaciers	196
		sea ice albedo	161
		slumping, ice cliffs	178
		SMB, <i>see</i> surface mass balance	
		soil	
		carbon cycle	81
		droughts	215, 251
S			
Sahel droughts	222		
salinity			
AMOC	107		
definition	102		
North Atlantic	102		
reaction constants	86		
sea level	57		
seawater density	107		
SAM, <i>see</i> southern annular mode			
Santa Ana winds	262		
saturation specific humidity, <i>see</i> Clausius-Clapeyron			
saturation water vapor pressure	25		
scale height	129		
sea ice			
age	160, 161		
albedo feedback	161		
Antarctic	164		
area	159		
concentration	159		
decline trend	167		
difficulty of attribution	164		
extent	159		
floes	159		
frazil ice	161		
grease ice	161		
insulation feedback	163		
loss, impacts	159		

soil (<i>continued</i>)		PDD	176
evaporation	238	sea level	61
heat capacity	35	surface temperature	31
moisture	237, 238	cloud feedbacks	135
moisture, heat waves	248	daily maximum	248
moisture, PDSI	214	energy balance	13
moisture, projections	224	extreme precipitation	233
porosity	238	glacier extent	200
water content	238	heat waves	248
solar constant	13	ice sheet	175, 183, 184
southern annular mode	269	MSE conservation	126
southern oscillation	146	soil, evaporation	238
specific heat capacity	37	Sverdrup	100
droughts	216	SW, <i>see</i> shortwave radiation	
heat waves	249		
ice	184		
MSE	126	T	
ocean water	37	teleconnections	
specific humidity		drought	217
droughts	215	forest fires	269
forest fires	264	temperature-precipitation	
heat waves	249	feedback	174
moist convection, clouds	125	terminal velocity	133
orders of magnitude	123	<i>The Day After Tomorrow</i>	116
precipitation extremes	234	thermocline	56, 102
saturation	125	tipping point	
saturation, Clausius-Clapeyron	26	AMOC	106, 112
saturation, hurricanes	148	climate examples	115
soil moisture	238	MISI	181
wet bulb temperature	252	total CO ₂	83
spectral radiance	20	toy models	114
speed of light	20	transpiration	214
Stefan-Boltzmann constant	13	tree rings	
Stokes velocity	133	drought reconstruction	221
storm surge	67	past fire reconstruction	262
stratospheric cooling	45	turbulence	
streamfunction		around falling drops	133
AMOC	105	cloud formation	126
Hadley cell	225	entrainment	131
subduction, carbon cycle	81	ocean mixing,	
subsidence		AMOC	103, 106
droughts	215		
heat waves	248	U	
land, sea level	70	updraft	
supersaturation	131	clouds	133
surface mass balance	173, 203	extreme precipitation	235
ice sheets	176	upwelling	61
mountain glaciers	195		

V		high pressure, droughts	215
vapor pressure deficit	264	high pressure, heat waves	247
volcanoes, carbon cycle	81	hurricane	141
VPD, <i>see</i> vapor pressure deficit		hurricane, eye wall	142
		low pressure, hurricane	142
		moisture flux	229
		ocean circulation	101
		sea ice transport	163
		shear, hurricanes	144
		stress, bulk formula	66
		stress, sea level	66
		surface, heat waves	250
		updrafts, precipitation	235
W			
water vapor, <i>see</i> specific humidity			
water vapor feedback	26–27		
West Antarctic ice sheet	172		
wet bulb temperature	251		
wind			
evaporation	238		
evapotranspiration	214		
fire indices	265	Y	
forest fires	262	yield stress	177